

# Part 3

## DEMOGRAPHY

### *Population*

#### **Historical**

According to manuscript notes made by Captain Lonsdale, the first enumeration of the people was taken by an officer from Sydney on the 25th May, 1836, less than one year after the date of the arrival of John Batman (29th May, 1835). This was the first official census in Victoria, which was at that time known as the District of Port Phillip, and it disclosed that the band of first arrivals consisted of 142 males and 35 females of European origin.

At the Census taken in 1838, it was ascertained that the number of inhabitants had increased to 3,511. By the Census of 1851 the population had reached 77,345.

The discovery of gold in 1851 gave considerable impetus to the growth of population in Victoria. The intercensal increase in the decade 1851 to 1861 was 461,283. This increase, on a base population of 77,345, is noteworthy when compared with an increase of 875,412, on a base population of 2,054,701, in the fourteen years from 1947 to 1961.

The 1850's and the 1950's represent the two outstanding periods of gain from migration into Victoria. An extended period of emigration from Victoria, mainly to Western Australia following discoveries of gold, was experienced between 1892 and 1907. In each of the years 1896, 1902, and 1903, due to the net loss from migration exceeding the gain from natural increase, a fall in total population was recorded. Falls were also recorded in 1915 and 1916, but these reflected embarkations on oversea service, which were taken into account in population estimates during the First World War.

Since the Second World War, coinciding with the generally increased level of migration, natural increase has maintained a higher level than during the great economic depression of the late 1920's and early 1930's, but has not attained the yet higher levels characteristic of the earlier years of settlement.

The estimated population at the end of 1961 was 2,949,354.

### Census Populations to 1961

#### General

In the following table is given the census population of each Australian State from 1901 to 1961 :—

#### AUSTRALIA—CENSUS POPULATIONS OF STATES AND TERRITORIES

State or Territory	Population at Census of—						
	1901	1911	1921	1933	1947	1954	1961
New South Wales	1,354,846	1,646,734	2,100,371	2,600,847	2,984,838	3,423,529	3,917,013
Victoria .. ..	<b>1,201,070</b>	<b>1,315,551</b>	<b>1,531,280</b>	<b>1,820,261</b>	<b>2,054,701</b>	<b>2,452,341</b>	<b>2,930,113</b>
Queensland ..	498,129	605,813	755,972	947,534	1,106,415	1,318,259	1,518,828
South Australia ..	358,346	408,558	495,160	580,949	646,073	797,094	969,340
Western Australia	184,124	282,114	332,732	438,852	502,480	639,771	736,629
Tasmania ..	172,475	191,211	213,780	227,599	257,078	308,752	350,340
Northern Territory	4,811	3,310	3,867	4,850	10,868	16,469	27,095
Australian Capital Territory ..	..	1,714*	2,572	8,947	16,905	30,315	58,828
Australia ..	3,773,801	4,455,005	5,435,734	6,629,839	7,579,358	8,986,530	10,508,186

\* Part of New South Wales prior to 1911.

The populations of Australian capital cities at each Census, 1901 to 1961, are shown in the following table :—

#### AUSTRALIA—POPULATIONS OF CAPITAL CITIES

Metropolitan Area	Population at Census of—						
	1901	1911	1921	1933	1947	1954	1961
Sydney .. ..	481,830	629,503	899,059	1,235,267	1,484,004	1,863,161	2,183,388
Melbourne ..	496,079	593,237	782,979	991,934	1,226,409	1,524,111	1,911,895
Brisbane ..	119,428	139,480	209,946	299,748	402,030	502,320	621,550
Adelaide ..	162,261	189,646	255,375	312,619	382,454	483,508	587,957
Perth .. ..	66,832	106,792	154,873	207,440	272,528	348,647	420,133
Hobart .. ..	34,604	39,937	52,361	60,406	76,534	95,206	115,932
Canberra ..	..	..	..	7,325	15,156	28,277	56,449
Total ..	1,361,034	1,698,595	2,354,593	3,114,739	3,859,115	4,845,230	5,897,304
Percentage of Australia	36	38	43	47	51	54	56

NOTE : Some of the apparent increase in the percentage of total population living in capital cities is due to periodic revision and extension of metropolitan boundaries.

Sydney has been the most populous city in Australia since 1902.

The population of Victoria at each Census from 1861 to 1961, and the numerical and percentage increase during each intercensal period, are shown in the following table :—

### VICTORIA—POPULATION

Year of Census	Persons			Males			Females		
	Population	Intercensal Increase		Population	Intercensal Increase		Population	Intercensal Increase	
		Numerical	Percentage		Numerical	Percentage		Numerical	Percentage
1861 ..	538,628	461,283*	596.40*	327,605	281,403*	609.07*	211,023	179,880*	577.59*
1871 ..	730,198	191,570	35.57	400,266	72,661	22.18	329,932	118,909	56.35
1881 ..	861,566	131,368	17.99	451,623	51,357	12.83	409,943	80,011	24.25
1891 ..	1,140,088	278,522	32.33	598,222	146,599	32.46	541,866	131,923	32.18
1901 ..	1,201,070	60,982	5.35	603,720	5,498	0.92	597,350	55,484	10.24
1911 ..	1,315,551	114,481	9.53	655,591	51,871	8.59	659,960	62,610	10.48
1921 ..	1,531,280	215,729	16.40	754,724	99,133	15.12	776,556	116,596	17.67
1933 ..	1,820,261	288,981	18.87	903,244	148,520	19.68	917,017	140,461	18.09
1947 ..	2,054,701	234,440	12.88	1,013,867	110,623	12.25	1,040,834	123,817	13.50
1954 ..	2,452,341	397,640	19.35	1,231,099	217,232	21.43	1,221,242	180,408	17.33
1961 ..	2,930,113	477,772	19.48	1,474,395	243,296	19.76	1,455,718	234,476	19.20

\* Since 1851.

An analysis of intercensal increases in the population of Victoria between 1933 and 1961 is made in the following table :—

### VICTORIA—ANALYSIS OF INTERCENSAL INCREASES IN POPULATION

Particulars	Intercensal Period		
	1933-1947	1947-1954	1954-1961
Population at Beginning of Period ..	1,820,261	2,054,701	2,452,341
Births .. .. .	482,413	350,696	423,811
Deaths .. .. .	290,153	157,955	167,391
Natural Increase .. .. .	192,260	192,741	256,420
Net Recorded Migration .. .. .	49,574	191,846	261,648
Total Recorded Increase .. .. .	241,834	384,587	518,068
Intercensal Adjustment * .. .. .	-7,394	13,053	-40,296
Population at End of Period .. .. .	2,054,701	2,452,341	2,930,113

\* Adjustment of population on the basis of Census results.

Numbers and rates of natural increase in each State and Territory between 1911 and 1961 are given in the following tables :—

### AUSTRALIA—NATURAL INCREASE

Period	New South Wales	Victoria	Queensland	South Australia	Western Australia	Tasmania	Northern Territory	Australian Capital Territory	Australia
ANNUAL AVERAGES									
1911-1920 ..	31,797	18,069	12,013	7,122	5,196	3,649	-- 12	30	77,864
1921-1930 ..	32,346	18,711	12,000	6,431	4,978	3,127	5	50	77,648
1931-1940* ..	22,159	10,811	9,880	3,716	4,396	2,438	32	138	53,570
1941-1950* ..	34,041	21,292	15,681	8,003	7,006	3,768	131	472	90,394
1951-1960 ..	43,607	33,948	20,980	11,554	10,930	5,523	468	946	127,956
ANNUAL TOTALS									
1957.. ..	46,139	36,333	22,084	11,960	11,627	5,765	531	966	135,405
1958.. ..	47,695	37,644	22,417	12,304	11,177	5,860	591	1,093	138,781
1959.. ..	45,617	37,167	23,250	12,429	11,614	5,845	672	1,170	137,764
1960.. ..	46,953	39,478	22,843	13,162	11,229	6,183	643	1,371	141,862
1961.. ..	51,344	41,386	23,881	14,584	11,349	6,193	750	1,538	151,025

\* Excess of births over civilian deaths for period September, 1939, to June, 1947.

### AUSTRALIA—NATURAL INCREASE PER 1,000 OF THE MEAN POPULATION

Period	New South Wales	Victoria	Queensland	South Australia	Western Australia	Tasmania	Northern Territory	Australian Capital Territory	Australia
ANNUAL AVERAGES									
1911-1920 ..	16·93	12·75	17·64	15·99	16·64	18·52	-- 3·10	12·95	15·77
1921-1930 ..	13·91	11·16	14·28	11·87	13·12	14·49	1·31	8·75†	12·97
1931-1940* ..	8·32	5·87	10·14	6·33	9·74	10·50	5·73	13·18†	7·92
1941-1950* ..	11·53	10·45	14·35	12·50	14·02	14·83	11·86	28·03†	12·04
1951-1960 ..	12·32	13·20	15·55	13·81	16·50	17·23	26·49	26·63†	13·71
ANNUAL TOTALS									
1957.. ..	12·73	13·68	15·68	13·68	16·91	17·55	25·75	25·42	14·05
1958.. ..	12·90	13·85	15·61	13·72	15·97	17·47	27·18	26·59	14·10
1959.. ..	12·12	13·35	15·88	13·49	16·32	17·12	28·45	25·10	13·70
1960.. ..	12·25	13·82	15·32	13·93	15·53	17·82	25·61	26·08	13·81
1961.. ..	13·11	14·14	15·76	15·04	15·39	17·51	28·38	26·16	14·38

\* Excess of births over civilian deaths for period September, 1939, to June, 1947.

† Rates affected by special local features.

Numerical and percentage changes in the age of the population in age groups for each intercensal period from 1947 to 1961 are given in the following table. A diagrammatic representation of the changes in age distribution, based on the Censuses of 1933 to 1961, is set out on pages 110-111.

VICTORIA—AGES OF THE POPULATION : INTERCENSAL INCREASES, 1947 TO 1961

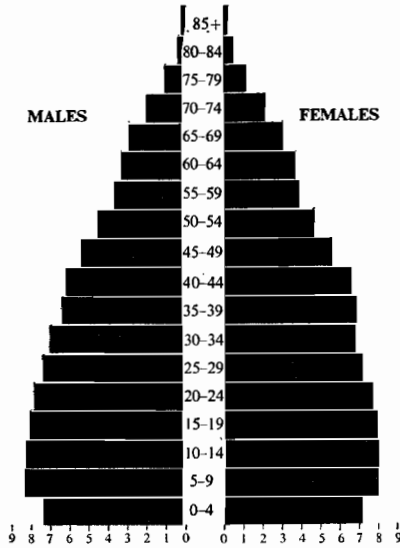
Age Group (Years)	Population at Census			Increase 1947-1954		Increase 1954-1961	
	1947	1954	1961	No.	%	No.	%
0-4 ..	197,239	258,335	307,535	61,096	30·98	49,200	19·05
5-9 ..	154,111	238,857	288,757	84,746	54·99	49,900	20·89
10-14 ..	135,393	180,807	277,848	45,414	33·54	97,041	53·67
15-19 ..	151,994	153,721	219,364	1,727	1·14	65,643	42·70
20-24 ..	165,883	160,930	195,076	-4,953	-2·99	34,146	21·22
25-29 ..	159,483	194,470	186,725	34,987	21·94	-7,745	-3·98
30-34 ..	160,325	195,595	209,543	35,270	22·00	13,948	7·13
35-39 ..	151,734	173,694	217,857	21,960	14·47	44,163	25·43
40-44 ..	139,302	172,584	187,624	33,282	23·89	15,040	8·71
45-49 ..	133,002	152,358	181,825	19,356	14·55	29,467	19·34
50-54 ..	122,875	137,512	158,847	14,637	11·91	21,335	15·52
55-59 ..	112,040	114,856	131,730	2,816	2·51	16,874	14·69
60-64 ..	89,379	108,442	115,030	19,063	21·33	6,588	6·08
65-69 ..	68,608	83,158	95,755	14,550	21·21	12,597	15·15
70-74 ..	49,523	58,227	73,620	8,704	17·58	15,393	26·44
75-79 ..	35,129	36,970	45,364	1,841	5·24	8,394	22·70
80-84 ..	19,569	20,454	24,232	885	4·52	3,778	18·47
85-89 ..	7,397	8,733	10,080	1,336	18·06	1,347	15·42
90-94 ..	1,505	2,346	2,809	841	55·88	463	19·74
95-99 ..	199	276	451	77	38·69	175	63·41
100 and over	11	16	41	5	45·45	25	156·25
Total ..	2,054,701	2,452,341	2,930,113	397,640	19·35	477,772	19·48
Under 21 ..	670,448	861,456	1,134,304	191,008	28·49	272,848	31·67
21-64 ..	1,202,312	1,380,705	1,543,457	178,393	14·84	162,752	11·79
65 and over	181,941	210,180	252,352	28,239	15·52	42,172	20·06

NOTE.—Recorded ages adjusted by distribution of unspecified ages.  
Minus sign (—) denotes decrease.

VICTORIA—POPULATION BY SEX

CENSUS 1933

(TEN THOUSANDS)



CENSUS 1954

(TEN THOUSANDS)

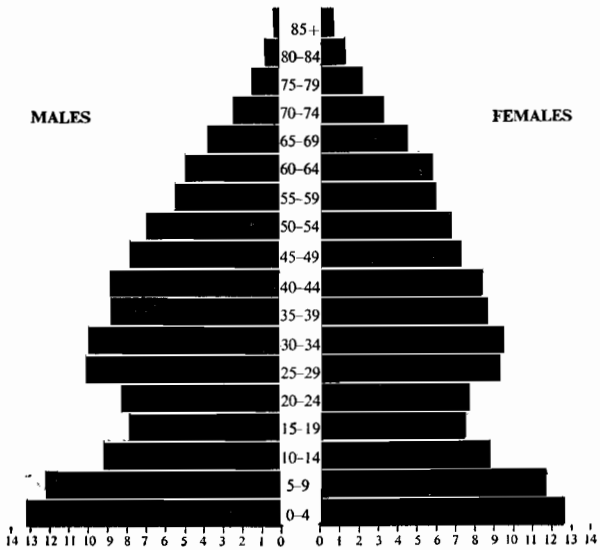
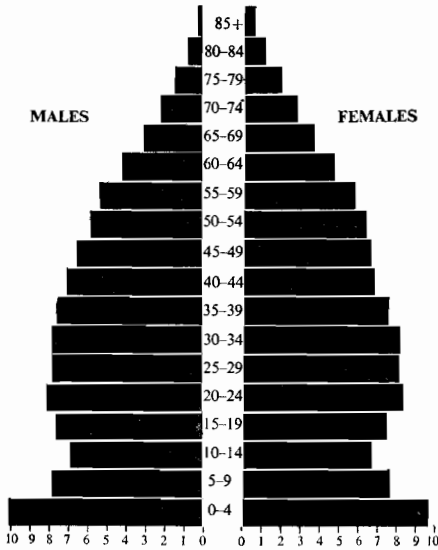


FIGURE 7.

AND FIVE YEAR AGE GROUP

CENSUS 1947  
(TEN THOUSANDS)



CENSUS 1961  
(TEN THOUSANDS)

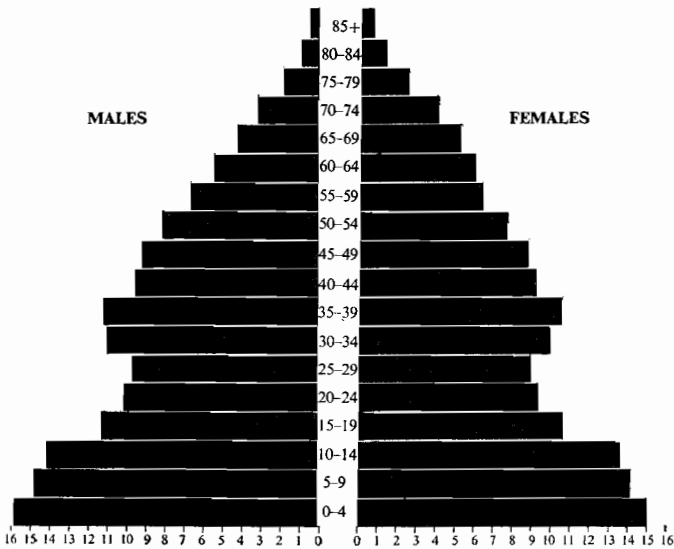


FIGURE 7—continued.

The ratio of males to females in age groups, at each Census from 1933 to 1961, is given in the following table :—

VICTORIA—MASCULINITY\* OF POPULATION IN AGE GROUPS†

Age Last Birthday (Years)	1933	1947	1954	1961
0-4	104·11	104·59	104·78	105·02
5-9	104·32	104·07	104·76	105·43
10-14	103·59	103·13	104·00	104·70
15-19	101·66	101·93	105·11	105·38
20-24	100·97	98·04	108·47	106·81
25-29	103·75	97·47	108·93	108·48
30-34	101·93	97·11	105·66	110·07
35-39	92·44	100·75	102·26	105·67
40-44	94·34	105·25	105·37	102·83
45-49	96·03	99·81	107·60	103·42
50-54	95·49	92·13	102·83	104·90
55-59	92·26	93·81	92·01	102·96
60-64	88·53	89·07	85·99	88·45
65-69	92·07	84·45	83·43	77·79
70-74	90·60	77·44	75·41	73·81
75-79	87·39	75·56	68·96	66·56
80-84	72·66	72·51	62·29	58·24
85-89	62·61	64·41	59·77	51·28
90-94	57·20	56·93	50·10	47·76
95-99	39·13	50·76	35·29	37·50
100 and over	33·33	10·00	33·33	24·24
All Ages	98·50	97·41	100·81	101·28

\* Number of males per 100 females.

† Recorded ages adjusted by distribution of unspecified ages.

Populations in statistical divisions at census dates from 1933 to 1961 are given in the following table :—

VICTORIA—POPULATION IN STATISTICAL DIVISIONS

Statistical Division	Census			
	1933	1947	1954	1961
Metropolitan*	991,934	1,226,409	1,524,111	1,911,895
Central*	212,573	230,118	209,447	239,057
North-Central	58,860	54,780	67,741	63,039
Western	158,374	159,368	180,051	198,022
Wimmera	61,131	54,171	57,686	58,799
Mallee	63,404	52,770	58,070	62,952
Northern	128,766	121,674	139,893	156,364
North-Eastern	59,736	60,160	78,770	86,325
Gippsland	83,905	91,400	128,531	149,051
Migratory	1,578	3,851	8,041	4,609
Total	1,820,261	2,054,701	2,452,341	2,930,113

\* The Metropolitan Area was redefined and enlarged, with a corresponding reduction in the defined area of the Central Statistical Division, in 1947, 1954, and 1961.

*Population of the Melbourne Metropolitan Area and Remainder of the State*

In comparing metropolitan and extra-metropolitan populations, it should be remembered that the apparent size of the drift of population from country to city will be partly explained by the arbitrary redefinition of the Metropolitan Area, from time to time, as the metropolis expanded.



The more rapid rate of increase of metropolitan population was in evidence at an early stage of settlement, and, as indicated in the following table, the Census of 1921 showed that the population in the Metropolitan Area then exceeded that in the rest of the State :—

**VICTORIA—POPULATION OF VICTORIA, MELBOURNE  
METROPOLITAN AREA, AND REMAINDER OF THE  
STATE**

Date	Population				
	Victoria	Melbourne Metropolitan Area		Remainder of State	
		Number	Percentage of Victoria	Number	Percentage of Victoria
Census—					
1861 ..	538,628	139,916	25·98	398,712	74·02
1871 ..	730,198	206,780	28·32	523,418	71·68
1881 ..	861,566	282,947	32·84	578,619	67·16
1891 ..	1,140,088	490,896	43·06	649,192	56·94
1901 ..	1,201,070	496,079	41·30	704,991	58·70
1911 ..	1,315,551	593,237	45·09	722,314	54·91
1921 ..	1,531,280	782,979	51·13	748,301	48·87
1933 ..	1,820,261	991,934	54·49	828,327	45·51
1947 ..	2,054,701	1,226,409	59·69	828,292	40·31
1954 ..	2,452,341	1,524,111	62·15	928,230	37·85
1961 ..	2,930,113	1,911,895	65·25	1,018,218	34·75

**Census of 1961**

*It is important to note that all figures in this part giving results of the 1961 Census are subject to revision.*

The following tables show the geographical distribution and other characteristics of the population of Victoria as disclosed by the Census of 29th–30th June, 1961. To facilitate comparison, results from the Census of 1954 are also given in most cases.

The population of each statistical division in Victoria, enumerated at the Census of 1961, is shown in the following table :—

**VICTORIA—POPULATION OF STATISTICAL DIVISIONS,  
ACCORDING TO SEX, AT CENSUS OF 1961**

Statistical Division	Males	Females	Persons
Metropolitan .. .. .	949,719	962,176	1,911,895
Central .. .. .	123,026	116,031	239,057
North-Central .. .. .	32,229	30,810	63,039
Western .. .. .	99,662	98,360	198,022
Wimmera .. .. .	29,838	28,961	58,799
Mallee .. .. .	32,922	30,030	62,952
Northern .. .. .	79,537	76,827	156,364
North-Eastern .. .. .	45,620	40,705	86,325
Gippsland .. .. .	78,082	70,969	149,051
Migratory .. .. .	3,760	849	4,609
Total Victoria .. .. .	1,474,395	1,455,718	2,930,113

NOTE.—The boundary of the Metropolitan Division was re-defined as from 1st January, 1961.

The percentage of population in metropolitan, urban and rural areas and the masculinity of the population in each of these divisions of the State are shown in the following table :—

VICTORIA—PERCENTAGE OF POPULATION AND MASCULINITY IN METROPOLITAN, URBAN, AND RURAL AREAS

Area	Percentage of Population						Masculinity*	
	Census 1954			Census 1961			Census 1954	Census 1961
	Males	Females	Total	Males	Females	Total		
Metropolitan	60·8	63·6	62·1	64·4	66·1	65·2	96·31	98·71
Urban ..	18·9	19·4	19·2	19·4	19·7	19·6	98·36	99·47
Rural ..	19·8	16·9	18·4	15·9	14·1	15·0	118·17	114·51
Migratory ..	0·5	0·1	0·3	0·3	0·1	0·2	420·12	442·87
Victoria ..	100·0	100·0	100·0	100·0	100·0	100·0	100·81	101·28

\* Number of males per 100 females.

The following table shows the population and the number of dwellings in each of the municipalities of Victoria, by Statistical Division, at the Censuses of 30th June, 1954, and 30th June, 1961, together with the area at 30th June, 1961.

For the purpose of the Census, a "dwelling" is any habitation occupied by a household group living together as a domestic unit, whether comprising the whole or any part of a building. The term has, therefore, a very wide reference and includes, in addition to houses and flats, anything from a single-roomed shack to a multi-roomed hotel or institution. In the following tables, the figures for dwellings represent all dwellings, whether private or other, and whether occupied or unoccupied.

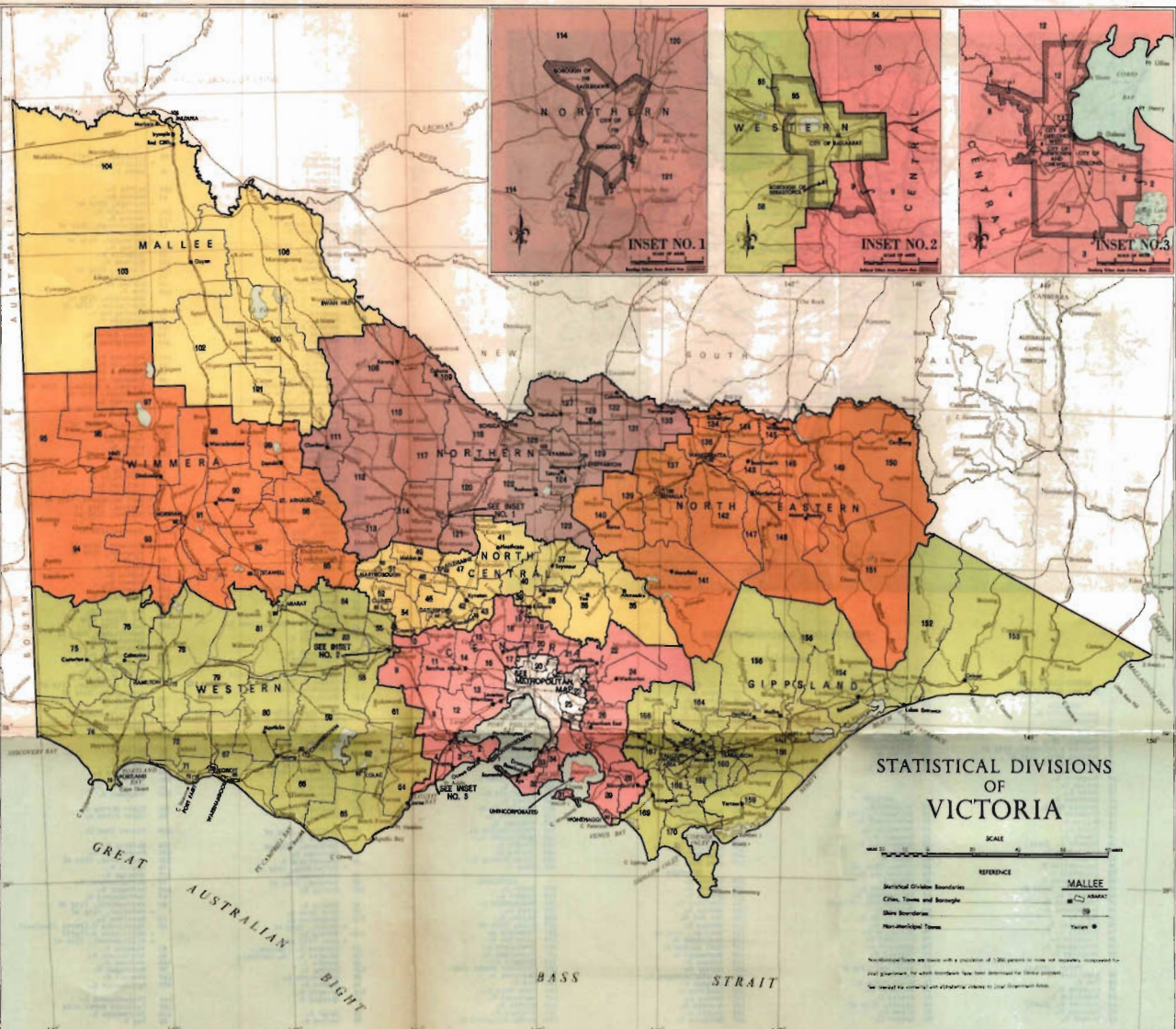
VICTORIA—POPULATION, DWELLINGS, AND AREA BY MUNICIPALITY

Municipality	Population		Occupied plus Unoccupied Dwellings		Area at 30.6.61 acres
	At 30.6.54 (Census)	At 30.6.61 (Census)	At 30.6.54 (Census)	At 30.6.61 (Census)	

MELBOURNE METROPOLITAN AREA\*

Altona Shire† ..	6,700	16,167	1,633	3,960	10,135
Berwick Shire (Part) ..	*	10,884	*	2,495	30,617
Box Hill City ..	35,554	50,412	9,795	13,847	5,309
Brighton City ..	40,458	41,302	12,157	12,788	3,380
Broadmeadows City‡ ..	23,065	66,306	5,772	15,481	17,490
Brunswick City ..	53,620	53,093	14,754	14,848	2,625
Bulla Shire (Part)‡ ..	‡	581	‡	103	14,540
Camberwell City ..	90,397	99,353	26,618	30,289	8,682
Caulfield City ..	75,217	74,859	22,941	23,998	5,431
Chelsea City ..	16,857	22,355	5,027	6,730	3,020
Coburg City ..	62,077	70,771	16,616	18,793	4,616
Collingwood City ..	27,155	25,413	7,387	6,990	1,180

For footnotes see page 121.

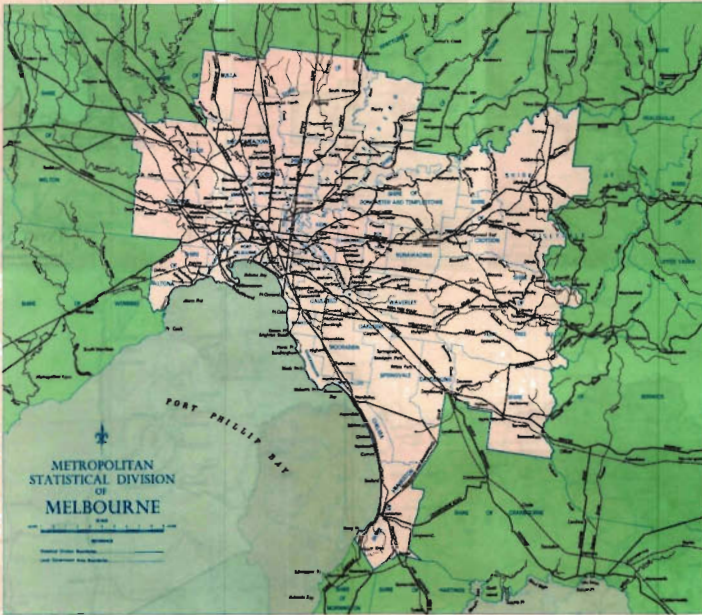


# STATISTICAL DIVISIONS OF VICTORIA



REFERENCE	
Statistical Division Boundaries	<b>MALLEE</b>
Cities, Towns and Boroughs	BALLARAT
State Boundaries	39
Non-incorporated Towns	Towns  8

Non-incorporated towns are those with a population of 1,000 persons or more and are separately designated for local government, for which boundaries have been determined for the census purposes.  
 See legend for symbols and abbreviations relating to local government bodies.



INDEX TO LOCAL GOVERNMENT AREAS

ALPHABETICAL INDEX

159 Alberton S.	88 Lillydale S. (Part) (Central)
82 Alford S.	89 Lillydale S. (Part)
83 Allora S.	90 Lons S.
84 Ararat S.	106 Maffra S.
85 Ararat City of	42 Malton S.
86 Avoca S.	43 Malvern, City of
153	44 Malvern S.
87	114 Manildra S.
88	45 Maryborough, City of
154 Maribahn S.	41 McEwens S.
89	115 Melbourne, City of
155	46 Melton S.
156	47 Meringue S.
90	48 Mewvale S.
91	104 Mildura S.
92	49 Milsons, City of
93	72 Milwauke S.
94	105 Minton S.
148	160 Mon S.
71	106 Morwell, City of
149	107 Morwell S.
150	80 Morwings S.
151	148 Mount S.
152	73 Mount House S.
113	147 Myrtleford S.
101	184 Narracan S.
145	147 Natcholls S.
95	48 Nawaflon S.
38	148 Northcote, City of
96	49 Newtown, City of
114	149 Northmead, City of
101	148 Northey S.
145	9
146	121 Oakleigh, City of
147	122 Okeoke S.
148	146 Okeoke S.
149	147 Okeoke S.
150	148 Okeoke S.
151	149 Okeoke S.
152	150 Okeoke S.
153	151 Okeoke S.
154	152 Okeoke S.
155	153 Okeoke S.
156	154 Okeoke S.
157	155 Okeoke S.
158	156 Okeoke S.
159	157 Okeoke S.
160	158 Okeoke S.
161	159 Okeoke S.
162	160 Okeoke S.
163	161 Okeoke S.
164	162 Okeoke S.
165	163 Okeoke S.
166	164 Okeoke S.
167	165 Okeoke S.
168	166 Okeoke S.
169	167 Okeoke S.
170	168 Okeoke S.
171	169 Okeoke S.
172	170 Okeoke S.
173	171 Okeoke S.
174	172 Okeoke S.
175	173 Okeoke S.
176	174 Okeoke S.
177	175 Okeoke S.
178	176 Okeoke S.
179	177 Okeoke S.
180	178 Okeoke S.
181	179 Okeoke S.
182	180 Okeoke S.
183	181 Okeoke S.
184	182 Okeoke S.
185	183 Okeoke S.
186	184 Okeoke S.
187	185 Okeoke S.
188	186 Okeoke S.
189	187 Okeoke S.
190	188 Okeoke S.
191	189 Okeoke S.
192	190 Okeoke S.
193	191 Okeoke S.
194	192 Okeoke S.
195	193 Okeoke S.
196	194 Okeoke S.
197	195 Okeoke S.
198	196 Okeoke S.
199	197 Okeoke S.
200	198 Okeoke S.
201	199 Okeoke S.
202	200 Okeoke S.
203	201 Okeoke S.
204	202 Okeoke S.
205	203 Okeoke S.
206	204 Okeoke S.
207	205 Okeoke S.
208	206 Okeoke S.
209	207 Okeoke S.
210	208 Okeoke S.
211	209 Okeoke S.
212	210 Okeoke S.
213	211 Okeoke S.
214	212 Okeoke S.
215	213 Okeoke S.
216	214 Okeoke S.
217	215 Okeoke S.
218	216 Okeoke S.
219	217 Okeoke S.
220	218 Okeoke S.
221	219 Okeoke S.
222	220 Okeoke S.
223	221 Okeoke S.
224	222 Okeoke S.
225	223 Okeoke S.
226	224 Okeoke S.
227	225 Okeoke S.
228	226 Okeoke S.
229	227 Okeoke S.
230	228 Okeoke S.
231	229 Okeoke S.
232	230 Okeoke S.
233	231 Okeoke S.
234	232 Okeoke S.
235	233 Okeoke S.
236	234 Okeoke S.
237	235 Okeoke S.
238	236 Okeoke S.
239	237 Okeoke S.
240	238 Okeoke S.
241	239 Okeoke S.
242	240 Okeoke S.
243	241 Okeoke S.
244	242 Okeoke S.
245	243 Okeoke S.
246	244 Okeoke S.
247	245 Okeoke S.
248	246 Okeoke S.
249	247 Okeoke S.
250	248 Okeoke S.
251	249 Okeoke S.
252	250 Okeoke S.
253	251 Okeoke S.
254	252 Okeoke S.
255	253 Okeoke S.
256	254 Okeoke S.
257	255 Okeoke S.
258	256 Okeoke S.
259	257 Okeoke S.
260	258 Okeoke S.
261	259 Okeoke S.
262	260 Okeoke S.
263	261 Okeoke S.
264	262 Okeoke S.
265	263 Okeoke S.
266	264 Okeoke S.
267	265 Okeoke S.
268	266 Okeoke S.
269	267 Okeoke S.
270	268 Okeoke S.
271	269 Okeoke S.
272	270 Okeoke S.
273	271 Okeoke S.
274	272 Okeoke S.
275	273 Okeoke S.
276	274 Okeoke S.
277	275 Okeoke S.
278	276 Okeoke S.
279	277 Okeoke S.
280	278 Okeoke S.
281	279 Okeoke S.
282	280 Okeoke S.
283	281 Okeoke S.
284	282 Okeoke S.
285	283 Okeoke S.
286	284 Okeoke S.
287	285 Okeoke S.
288	286 Okeoke S.
289	287 Okeoke S.
290	288 Okeoke S.
291	289 Okeoke S.
292	290 Okeoke S.
293	291 Okeoke S.
294	292 Okeoke S.
295	293 Okeoke S.
296	294 Okeoke S.
297	295 Okeoke S.
298	296 Okeoke S.
299	297 Okeoke S.
300	298 Okeoke S.
301	299 Okeoke S.
302	300 Okeoke S.
303	301 Okeoke S.
304	302 Okeoke S.
305	303 Okeoke S.
306	304 Okeoke S.
307	305 Okeoke S.
308	306 Okeoke S.
309	307 Okeoke S.
310	308 Okeoke S.
311	309 Okeoke S.
312	310 Okeoke S.
313	311 Okeoke S.
314	312 Okeoke S.
315	313 Okeoke S.
316	314 Okeoke S.
317	315 Okeoke S.
318	316 Okeoke S.
319	317 Okeoke S.
320	318 Okeoke S.
321	319 Okeoke S.
322	320 Okeoke S.
323	321 Okeoke S.
324	322 Okeoke S.
325	323 Okeoke S.
326	324 Okeoke S.
327	325 Okeoke S.
328	326 Okeoke S.
329	327 Okeoke S.
330	328 Okeoke S.
331	329 Okeoke S.
332	330 Okeoke S.
333	331 Okeoke S.
334	332 Okeoke S.
335	333 Okeoke S.
336	334 Okeoke S.
337	335 Okeoke S.
338	336 Okeoke S.
339	337 Okeoke S.
340	338 Okeoke S.
341	339 Okeoke S.
342	340 Okeoke S.
343	341 Okeoke S.
344	342 Okeoke S.
345	343 Okeoke S.
346	344 Okeoke S.
347	345 Okeoke S.
348	346 Okeoke S.
349	347 Okeoke S.
350	348 Okeoke S.
351	349 Okeoke S.
352	350 Okeoke S.
353	351 Okeoke S.
354	352 Okeoke S.
355	353 Okeoke S.
356	354 Okeoke S.
357	355 Okeoke S.
358	356 Okeoke S.
359	357 Okeoke S.
360	358 Okeoke S.
361	359 Okeoke S.
362	360 Okeoke S.
363	361 Okeoke S.
364	362 Okeoke S.
365	363 Okeoke S.
366	364 Okeoke S.
367	365 Okeoke S.
368	366 Okeoke S.
369	367 Okeoke S.
370	368 Okeoke S.
371	369 Okeoke S.
372	370 Okeoke S.
373	371 Okeoke S.
374	372 Okeoke S.
375	373 Okeoke S.
376	374 Okeoke S.
377	375 Okeoke S.
378	376 Okeoke S.
379	377 Okeoke S.
380	378 Okeoke S.
381	379 Okeoke S.
382	380 Okeoke S.
383	381 Okeoke S.
384	382 Okeoke S.
385	383 Okeoke S.
386	384 Okeoke S.
387	385 Okeoke S.
388	386 Okeoke S.
389	387 Okeoke S.
390	388 Okeoke S.
391	389 Okeoke S.
392	390 Okeoke S.
393	391 Okeoke S.
394	392 Okeoke S.
395	393 Okeoke S.
396	394 Okeoke S.
397	395 Okeoke S.
398	396 Okeoke S.
399	397 Okeoke S.
400	398 Okeoke S.
401	399 Okeoke S.
402	400 Okeoke S.
403	401 Okeoke S.
404	402 Okeoke S.
405	403 Okeoke S.
406	404 Okeoke S.
407	405 Okeoke S.
408	406 Okeoke S.
409	407 Okeoke S.
410	408 Okeoke S.
411	409 Okeoke S.
412	410 Okeoke S.
413	411 Okeoke S.
414	412 Okeoke S.
415	413 Okeoke S.
416	414 Okeoke S.
417	415 Okeoke S.
418	416 Okeoke S.
419	417 Okeoke S.
420	418 Okeoke S.
421	419 Okeoke S.
422	420 Okeoke S.
423	421 Okeoke S.
424	422 Okeoke S.
425	423 Okeoke S.
426	424 Okeoke S.
427	425 Okeoke S.
428	426 Okeoke S.
429	427 Okeoke S.
430	428 Okeoke S.
431	429 Okeoke S.
432	430 Okeoke S.
433	431 Okeoke S.
434	432 Okeoke S.
435	433 Okeoke S.
436	434 Okeoke S.
437	435 Okeoke S.
438	436 Okeoke S.
439	437 Okeoke S.
440	438 Okeoke S.
441	439 Okeoke S.
442	440 Okeoke S.
443	441 Okeoke S.
444	442 Okeoke S.
445	443 Okeoke S.
446	444 Okeoke S.
447	445 Okeoke S.
448	446 Okeoke S.
449	447 Okeoke S.
450	448 Okeoke S.
451	449 Okeoke S.
452	450 Okeoke S.
453	451 Okeoke S.
454	452 Okeoke S.
455	453 Okeoke S.
456	454 Okeoke S.
457	455 Okeoke S.
458	456 Okeoke S.
459	457 Okeoke S.
460	458 Okeoke S.
461	459 Okeoke S.
462	460 Okeoke S.
463	461 Okeoke S.
464	462 Okeoke S.
465	463 Okeoke S.
466	464 Okeoke S.
467	465 Okeoke S.
468	466 Okeoke S.
469	467 Okeoke S.
470	468 Okeoke S.
471	469 Okeoke S.
472	470 Okeoke S.
473	471 Okeoke S.
474	472 Okeoke S.
475	473 Okeoke S.
476	474 Okeoke S.
477	475 Okeoke S.
478	476 Okeoke S.
479	477 Okeoke S.
480	478 Okeoke S.
481	479 Okeoke S.
482	480 Okeoke S.
483	481 Okeoke S.
484	482 Okeoke S.
485	483 Okeoke S.
486	484 Okeoke S.
487	485 Okeoke S.
488	486 Okeoke S.
489	487 Okeoke S.
490	488 Okeoke S.
491	489 Okeoke S.
492	490 Okeoke S.
493	491 Okeoke S.
494	492 Okeoke S.
495	493 Okeoke S.
496	494 Okeoke S.
497	495 Okeoke S.
498	496 Okeoke S.
499	497 Okeoke S.
500	498 Okeoke S.

INDEX TO LOCAL GOVERNMENT AREAS

NUMERICAL INDEX

METROPOLITAN AREA

See map on this page

CENTRAL

1 Queenscliff S.

2 Sale S.

3 South Western S.

4 Geelong, City of

5 Woodson & Kilbuck, City of

6 Geelong West, City of

7 Belmont S.

8 Sunbury S.

9 Murrumbidgee S.

10 Wangaratta S.

11 Ballin S.

12 Corio S.

13 Werribee S.

14 Scotch Marsh S.

15 Geelong S.

16 Ballin S.

17 Sunbury S.

18 Murrumbidgee S.

19 Wangaratta S.

20 Williams S.

21 Ballin S.

22 Murrumbidgee S.

23 Lillydale S.

24 Upper Yarra S.

25 Port Phillip S.

26 Werribee S.

27 Sunbury S.

28 Sunbury S.

29 Sunbury S.

30 Sunbury S.

31 Sunbury S.

32 Sunbury S.

33 Sunbury S.

34 Hastings S.

35

36

37

38

39

40

41

42

43 Kyrenon S.

44 Geelong & Footscay S.

45 Geelong S.

46 Werribee S.

47 Sunbury S.

48 Sunbury S.

49 Sunbury S.

50 Sunbury S.

51 Sunbury S.

52 Sunbury S.

53 Sunbury S.

54 Werribee S.

VICTORIA—POPULATION, DWELLINGS, AND AREA—*continued*

Municipality	Population		Occupied plus Unoccupied Dwellings		Area at 30.6.61 acres
	At 30.6.54 (Census)	At 30.6.61 (Census)	At 30.6.54 (Census)	At 30.6.61 (Census)	
<b>MELBOURNE METROPOLITAN AREA*—<i>continued</i></b>					
Croydon Shire§ .. ..	§	15,694	§	4,460	8,320
Dandenong City¶ .. ..	27,748	24,909	7,418	6,433	8,960
Doncaster and Templestowe Shire .. ..	6,814	19,061	1,958	5,453	22,090
Eltham Shire (Part)* .. ..	7,499	12,745	2,143	3,602	9,505
Essendon City .. ..	57,873	58,987	16,519	17,178	4,073
Fern Tree Gully Shire (Part)* .. ..	22,019	35,927	7,661	11,491	54,012
Fitzroy City .. ..	30,312	29,399	8,436	7,973	904
Footscray City .. ..	57,915	60,734	15,599	16,617	4,441
Frankston Shire   .. ..	15,478	26,722	5,036	8,222	17,460
Hawthorn City .. ..	37,188	36,707	11,731	12,500	2,411
Heidelberg City .. ..	60,007	86,430	15,350	22,002	30,490
Keilor City** .. ..	10,681	29,519	2,829	7,653	24,265
Kew City .. ..	31,518	33,341	8,642	9,441	3,596
Lillydale Shire (Part)§ .. ..	16,619	12,894	5,291	4,145	49,045
Malvern City .. ..	46,910	47,870	14,574	15,376	3,935
Melbourne City .. ..	93,172	76,810	22,800	19,711	7,765
Moorabbin City†† .. ..	65,332	95,669	17,777	25,825	12,655
Mordialloc City .. ..	21,025	26,526	5,876	7,555	3,013
Northcote City .. ..	43,604	44,746	12,473	13,364	2,819
Nunawading City .. ..	23,855	53,246	6,475	14,359	10,275
Oakleigh City†† .. ..	24,305	48,017	6,694	12,736	7,486
Port Melbourne City .. ..	13,104	12,370	3,501	3,399	2,628
Prahran City .. ..	54,009	52,554	18,468	19,259	2,361
Preston City .. ..	63,868	84,146	16,324	21,124	9,155
Richmond City .. ..	35,213	33,863	10,083	9,662	1,513
Ringwood City‡‡ .. ..	12,951	24,427	3,713	6,661	5,625
Sandringham City .. ..	31,758	37,001	9,152	10,910	3,700
South Melbourne City .. ..	37,995	32,528	11,564	9,878	2,203
Springvale City¶¶†† .. ..	¶	28,526	¶	7,439	24,000
St. Kilda City .. ..	53,301	52,205	18,102	19,668	2,118
Sunshine City .. ..	41,332	62,321	9,481	14,470	19,775
Waverley City†† .. ..	20,293	44,987	5,263	11,702	14,585
Whittlesea Shire (Part)*‡ .. ..	* ‡	8,912	* ‡	2,313	34,206
Williamstown City .. ..	29,313	30,606	8,014	8,538	3,377
Total—Melbourne Metropolitan Area .. ..	1,524,111	1,911,895	431,647	541,441	519,791

CENTRAL STATISTICAL DIVISION

Bacchus Marsh Shire .. ..	3,972	4,425	1,053	1,183	144,640
Ballan Shire .. ..	2,752	2,440	921	907	227,200
Bannockburn Shire .. ..	2,126	2,200	623	685	174,080
Barrabool Shire .. ..	1,917	2,344	959	1,517	146,560
Bass Shire .. ..	3,761	3,851	1,176	1,314	129,920
Bellarine Shire .. ..	7,015	10,127	2,280	3,587	81,920
Berwick Shire (Part)* .. ..	12,412	10,815	3,812	3,564	218,343
Broadmeadows Shire‡ .. ..	1,010	..	307	..	..
Bulla Shire (Part)‡§§ .. ..	3,232	4,243	488	831	89,779
Bungaree Shire .. ..	1,966	2,049	484	561	56,320
Buninyong Shire .. ..	3,953	4,313	1,107	1,236	192,000
Corio Shire .. ..	15,808	29,450	3,612	7,009	172,800
Cranbourne Shire .. ..	8,201	10,908	2,596	3,431	183,680

For footnotes see page 121.

VICTORIA—POPULATION, DWELLINGS, AND AREA—*continued*

Municipality	Population		Occupied plus Unoccupied Dwellings		Area at 30.6.61  acres
	At 30.6.54 (Census)	At 30.6.61 (Census)	At 30.6.54 (Census)	At 30.6.61 (Census)	
<b>CENTRAL STATISTICAL DIVISION—<i>continued</i></b>					
Eltham Shire (Part)*§§	3,942	3,830	1,394	1,331	64,736
Fern Tree Gully Shire (Part)*	3,427	1,660	1,483	826	20,871
Flinders Shire§§	12,072	10,512	6,405	8,731	80,000
Geelong City	20,034	18,019	5,263	5,336	3,322
Geelong West City	17,313	17,681	4,805	5,345	1,299
Gisborne Shire	2,122	2,145	750	812	64,000
Hastings Shire§§	2,622	6,883	826	2,367	71,680
Healesville Shire§§	5,168	6,068	1,550	1,968	248,960
Kilmore Shire (Part) (See North-Central Division)†§§	†§§	773	†§§	229	63,360
Korumburra Shire	7,386	7,813	1,962	2,142	151,680
Lillydale Shire (Part)*	4,488	5,390	1,613	1,814	49,197
Melton Shire*	1,424	1,804	424	505	111,298
Mornington Shire	5,793	7,819	2,191	3,375	22,400
Newtown and Chilwell City§§	11,191	11,788	3,056	3,435	1,480
Phillip Island Shire	1,231	1,241	528	794	24,960
Queenscliffe Borough	2,551	2,659	1,002	1,281	2,099
Romsey Shire§§	2,813	2,636	842	879	152,960
South Barwon Shire§§	11,016	16,794	3,304	5,207	40,856
Upper Yarra Shire	6,952	5,692	1,995	1,916	391,680
Werribee Shire†	9,414	13,689	2,017	2,947	165,120
Whittlesea Shire (Part)*†	5,724	2,578	1,548	783	113,632
Wonthaggi Borough	4,461	4,190	1,327	1,335	13,088
Not Incorporated (French Is.)	178	228	39	47	41,600
<b>Total—Central Statistical Division</b>	<b>209,447</b>	<b>239,057</b>	<b>63,742</b>	<b>79,230</b>	<b>3,717,520</b>
<b>NORTH-CENTRAL STATISTICAL DIVISION</b>					
Alexandra Shire	6,523	4,545	1,533	1,555	462,080
Broadford Shire	1,939	2,076	580	589	144,640
Castlemaine Town	6,577	7,216	1,894	2,108	5,760
Clunes Borough	871	836	307	303	5,760
Creswick Shire	3,554	3,587	1,084	1,100	136,320
Daylesford Borough	3,216	2,776	1,019	1,067	4,013
Glenlyon Shire	2,273	1,869	853	814	146,560
Kilmore Shire (Part) (See Central Division)†§§	1,932	1,955	442	448	60,160
Kyneton Shire	6,063	5,979	1,958	2,022	179,200
Maldon Shire	2,030	2,008	737	715	138,240
Maryborough City§§	6,827	7,235	2,034	2,245	5,760
McIvor Shire§§	2,201	2,140	642	624	357,120
Metcalfe Shire	2,425	2,316	726	743	145,920
Newham and Woodend Shire	2,058	2,102	651	682	60,800
Newstead Shire	2,088	1,874	669	665	101,120
Pyalong Shire	483	456	144	141	149,120
Seymour Shire§§	11,596	9,254	1,963	2,285	234,656
Talbot Shire	803	742	293	276	126,080
Tullaroop Shire	1,416	1,376	430	433	157,440
Yea Shire§§	2,866	2,697	887	959	338,144
<b>Total—North-Central Statistical Division</b>	<b>67,741</b>	<b>63,039</b>	<b>18,846</b>	<b>19,774</b>	<b>2,958,893</b>

For footnotes see page 121.

VICTORIA—POPULATION, DWELLINGS, AND AREA—*continued*

Municipality	Population		Occupied plus Unoccupied Dwellings		Area at 30.6.61
	At 30.6.54 (Census)	At 30.6.61 (Census)	At 30.6.54 (Census)	At 30.6.61 (Census)	
acres					
<b>WESTERN STATISTICAL DIVISION</b>					
Ararat City§§ .. ..	7,414	7,934	1,804	1,999	4,710
Ararat Shire§§ .. ..	4,659	4,600	1,323	1,333	903,629
Ballaarat City .. ..	39,945	41,037	11,218	11,850	8,550
Ballarat Shire .. ..	6,145	10,102	1,327	2,346	117,760
Belfast Shire .. ..	1,949	1,917	489	492	128,000
Camperdown Town§§ .. ..	3,205	3,446	906	1,010	3,591
Colac City§§ .. ..	8,032	9,252	2,164	2,545	2,688
Colac Shire .. ..	6,963	7,326	1,799	1,968	360,320
Dundas Shire§§ .. ..	3,903	4,072	1,038	1,165	856,064
Glenelg Shire .. ..	5,949	5,887	1,684	1,734	885,120
Grenville Shire .. ..	1,862	1,833	575	605	208,640
Hamilton City .. ..	8,507	9,495	2,273	2,641	5,351
Hampden Shire .. ..	8,781	9,176	2,384	2,545	647,040
Heytesbury Shire .. ..	6,464	7,281	1,632	1,846	381,440
Koroit Borough .. ..	1,401	1,466	350	365	5,696
Leigh Shire .. ..	1,096	1,460	334	386	242,560
Lexton Shire .. ..	1,350	1,443	393	398	202,880
Minhamite Shire .. ..	2,520	2,907	678	762	337,280
Mortlake Shire .. ..	4,060	4,627	1,088	1,201	528,000
Mount Rouse Shire .. ..	2,859	3,056	786	858	200,720
Otway Shire .. ..	4,197	3,970	1,204	1,317	435,840
Port Fairy Borough .. ..	2,265	2,426	683	813	5,683
Portland Town§§ .. ..	4,759	6,014	1,470	1,857	5,978
Portland Shire§§ .. ..	7,056	6,982	1,992	2,091	912,000
Ripon Shire .. ..	3,365	3,581	1,020	1,099	378,880
Sebastopol Borough .. ..	3,265	4,663	863	1,186	1,747
Wannon Shire§§ .. ..	3,949	4,154	1,078	1,175	488,576
Warrnambool City§§ .. ..	10,850	15,702	2,907	4,198	7,091
Warrnambool Shire .. ..	8,920	7,610	2,217	1,951	392,320
Winchelsea Shire .. ..	4,361	4,603	1,509	1,743	344,960
Not Incorporated (Lady Julia Percy Is. and Tower Hill Lake Reserve) .. ..	..	..	..	..	2,112
<b>Total—Western Statistical Division .. ..</b>	<b>180,051</b>	<b>198,022</b>	<b>49,188</b>	<b>55,479</b>	<b>9,155,226</b>
<b>WIMMERA STATISTICAL DIVISION</b>					
Arapiles Shire .. ..	2,160	2,133	573	584	491,520
Avoca Shire .. ..	2,381	2,153	744	729	277,760
Dimboola Shire .. ..	6,224	6,038	1,724	1,781	1,215,360
Donald Shire§§ .. ..	2,864	2,921	790	849	357,760
Dunmunkle Shire .. ..	4,110	4,086	1,141	1,181	382,080
Horsham City .. ..	7,767	9,240	2,152	2,646	5,939
Kaniva Shire .. ..	2,290	2,408	620	693	762,240
Kara Kara Shire§§ .. ..	1,663	1,421	488	441	567,040
Kowree Shire .. ..	5,012	5,426	1,308	1,492	1,331,200
Lowan Shire .. ..	3,999	3,872	1,161	1,212	663,040
St. Arnaud Town .. ..	3,037	3,150	865	922	6,279
Stawell Town§§ .. ..	5,463	5,506	1,603	1,691	5,952
Stawell Shire .. ..	2,286	2,193	751	784	645,760
Warracknabeal Shire .. ..	4,861	4,717	1,366	1,455	454,400
Wimmera Shire .. ..	3,569	3,535	963	961	645,760
<b>Total—Wimmera Statistical Division .. ..</b>	<b>57,686</b>	<b>58,799</b>	<b>16,249</b>	<b>17,421</b>	<b>7,812,090</b>

For footnotes see page 121.

VICTORIA—POPULATION, DWELLINGS, AND AREA—*continued*

Municipality	Population		Occupied plus Unoccupied Dwellings		Area at 30.6.61
	At 30.6.54 (Census)	At 30.6.61 (Census)	At 30.6.54 (Census)	At 30.6.61 (Census)	
					acres
<b>MALLEE STATISTICAL DIVISION</b>					
Birchip Shire .. ..	1,745	1,899	459	498	362,880
Karkaroc Shire .. ..	4,424	4,168	1,151	1,162	919,040
Mildura City .. ..	10,972	12,279	2,884	3,458	5,408
Mildura Shire .. ..	15,727	16,340	4,258	4,548	2,605,440
Swan Hill Borough .. ..	5,197	6,186	1,323	1,674	3,373
Swan Hill Shire .. ..	11,147	12,785	2,908	3,292	1,619,200
Walpeup Shire .. ..	4,310	4,548	1,151	1,191	2,667,520
Wycheproof Shire .. ..	4,548	4,747	1,166	1,243	1,016,960
Total—Mallee Statistical Division .. ..	58,070	62,952	15,300	17,066	9,199,821
<b>NORTHERN STATISTICAL DIVISION</b>					
Bendigo City .. ..	28,726	30,195	8,364	9,110	8,032
Bet Bet Shire .. ..	2,296	2,078	735	694	229,120
Charlton Shire .. ..	2,359	2,492	639	683	290,560
Cobram Shire .. ..	3,642	4,798	943	1,212	108,800
Cohuna Shire .. ..	3,872	4,435	997	1,150	122,880
Deakin Shire .. ..	4,635	5,296	1,232	1,404	237,440
Eaglehawk Borough .. ..	4,696	4,926	1,404	1,511	3,584
East Loddon Shire .. ..	1,446	1,703	407	465	295,040
Echuca Borough .. ..	5,405	6,443	1,489	1,773	4,378
Gordon Shire .. ..	2,969	3,227	857	915	499,840
Goulburn Shire§§ .. ..	1,760	1,900	505	643	254,720
Huntly Shire .. ..	2,247	2,295	670	696	216,960
Inglewood Borough§§ .. ..	957	§§	289	§§	§§
Kerang Shire .. ..	8,483	9,095	2,277	2,483	823,680
Korong Shire§§ .. ..	2,986	3,816	938	1,211	589,440
Kyabram Borough .. ..	3,335	3,936	888	1,125	5,152
Marong Shire .. ..	5,421	6,100	1,532	1,754	368,000
Nathalia Shire§§ .. ..	§§	3,208	§§	887	305,920
Numurkah Shire§§ .. ..	8,027	6,111	2,128	1,532	178,560
Rochester Shire .. ..	6,330	7,253	1,713	1,978	480,000
Rodney Shire .. ..	9,181	10,635	2,328	2,758	254,080
Shepparton City .. ..	10,848	13,580	3,004	3,790	4,716
Shepparton Shire .. ..	5,376	6,113	1,362	1,546	230,400
Strathfieldsaye Shire .. ..	4,213	6,031	1,120	1,544	152,960
Tungamah Shire .. ..	2,258	2,446	627	667	282,240
Waranga Shire§§ .. ..	4,655	4,528	1,326	1,304	408,320
Yarrawonga Shire .. ..	3,770	3,724	965	1,087	155,520
Total—Northern Statistical Division .. ..	139,893	156,364	38,739	43,922	6,510,342

For footnotes see page 121.



VICTORIA—POPULATION, DWELLINGS, AND AREA—*continued*

Municipality	Population		Occupied plus Unoccupied Dwellings		Area at 30.6.61  acres
	At 30.6.54 (Census)	At 30.6.61 (Census)	At 30.6.54 (Census)	At 30.6.61 (Census)	
<b>NORTH-EASTERN STATISTICAL DIVISION</b>					
Beechworth Shire .. ..	4,417	4,845	1,039	1,085	190,720
Benalla Borough§§ .. ..	6,045	8,260	1,652	2,102	4,544
Benalla Shire§§ .. ..	4,407	3,692	1,016	1,022	573,568
Bright Shire§§ .. ..	8,060	4,331	2,092	1,532	733,440
Chiltern Shire .. ..	1,613	1,652	502	498	122,880
Euroa Shire .. ..	4,476	4,833	1,303	1,433	330,880
Mansfield Shire .. ..	5,023	4,423	1,447	1,461	965,120
Myrtleford Shire§§ .. ..	§§	3,770	§§	979	176,000
Omeo Shire .. ..	2,072	2,145	609	664	1,428,480
Oxley Shire§§ .. ..	4,393	5,229	1,180	1,408	691,072
Rutherglen Shire .. ..	2,897	2,655	852	847	131,200
Towong Shire .. ..	4,385	4,207	1,187	1,234	1,025,280
Upper Murray Shire .. ..	2,521	2,938	669	820	607,360
Violet Town Shire .. ..	1,424	1,360	412	435	231,040
Wangaratta City§§ .. ..	10,715	13,784	2,761	3,579	5,478
Wangaratta Shire .. ..	2,267	2,140	608	601	226,560
Wodonga Shire .. ..	10,924	12,968	1,890	2,532	85,760
Yackandandah Shire .. ..	3,131	3,093	825	869	274,560
<b>Total—North-Eastern Statistical Division .. ..</b>	<b>78,770</b>	<b>86,325</b>	<b>20,044</b>	<b>23,101</b>	<b>7,803,942</b>
<b>GIPPSLAND STATISTICAL DIVISION</b>					
Alberton Shire .. ..	5,602	5,926	1,665	1,801	461,440
Avon Shire .. ..	3,215	3,214	744	793	588,800
Bairnsdale Shire .. ..	10,104	11,279	2,707	3,188	606,720
Buln Buln Shire .. ..	8,015	8,427	2,212	2,396	311,040
Maffra Shire .. ..	8,554	8,758	2,269	2,356	1,031,040
Mirboo Shire .. ..	1,862	2,052	507	556	62,720
Moe Borough§§ .. ..	§§	15,463	§§	3,727	5,286
Morwell Shire .. ..	13,033	18,359	3,334	4,511	165,760
Narracan Shire§§ .. ..	21,023	9,343	5,499	2,545	570,880
Orbost Shire .. ..	5,492	6,179	1,562	1,818	2,368,000
Rosedale Shire .. ..	3,860	4,566	1,193	1,436	562,560
Sale City .. ..	6,537	7,899	1,737	2,135	5,363
South Gippsland Shire .. ..	4,882	5,247	1,302	1,506	353,920
Tambo Shire .. ..	5,085	5,431	1,418	1,889	867,840
Traralgon Borough§§ .. ..	§§	12,300	§§	3,067	4,930
Traralgon Shire§§ .. ..	10,036	1,229	2,692	330	115,390
Warragul Shire .. ..	8,605	9,585	2,242	2,601	87,040
Woorayl Shire .. ..	7,046	8,784	2,130	2,637	307,840
Yallourn Works Area .. ..	5,580	5,010	1,213	1,192	8,653
Not Incorporated (Gippsland Lakes (Part) and Bass Strait Islands) .. ..	..	..	..	..	82,886
<b>Total—Gippsland Statistical Division .. ..</b>	<b>128,531</b>	<b>149,051</b>	<b>34,426</b>	<b>40,484</b>	<b>8,568,108</b>

For footnotes see page 121.

VICTORIA—POPULATION, DWELLINGS, AND AREA—*continued*

Municipality	Population		Occupied plus Unoccupied Dwellings		Area at 30.6.61
	At 30.6.54 (Census)	At 30.6.61 (Census)	At 30.6.54 (Census)	At 30.6.61 (Census)	
	acres				
	SUMMARY				
Statistical Divisions—					
Metropolitan .. ..	1,524,111	1,911,895	431,647	541,441	519,791
Central .. ..	209,447	239,057	63,742	79,230	3,717,520
North-Central .. ..	67,741	63,039	18,846	19,774	2,958,893
Western .. ..	180,051	198,022	49,188	55,479	9,155,226
Wimmera .. ..	57,686	58,799	16,249	17,421	7,812,090
Mallee .. ..	58,070	62,952	15,300	17,066	9,199,821
Northern .. ..	139,893	156,364	38,739	43,922	6,510,342
North-Eastern .. ..	78,770	86,325	20,044	23,101	7,803,942
Gippsland .. ..	128,531	149,051	34,426	40,484	8,568,108
Migratory .. ..	8,041	4,609	..	..	..
Total—Victoria ..	2,452,341	2,930,113	688,181	837,918	56,245,733
	PRINCIPAL URBAN AREAS				
Geelong Urban Area—					
Geelong City .. ..	20,034	18,019	5,263	5,336	3,322
Geelong West City ..	17,313	17,681	4,805	5,345	1,299
Newtown and Chilwell City§§	11,191	11,788	3,056	3,435	1,480
Bellarine Shire (Part) ..	2,298	4,351	607	1,177	4,384
Corio Shire (Part) ..	12,998	25,712	3,022	6,083	7,546
South Barwon Shire (Part)§§	8,761	14,226	2,253	3,873	11,115
Total—Geelong Urban Area	72,595	91,777	19,006	25,249	29,146
Ballarat Urban Area—					
Ballaarat City .. ..	39,945	41,037	11,218	11,850	8,550
Sebastopol Borough ..	3,265	4,663	863	1,186	1,747
Ballarat Shire (Part) ..	4,199	8,348	848	1,854	3,744
Buninyong Shire (Part) ..	621	832	175	236	3,668
Total—Ballarat Urban Area	48,030	54,880	13,104	15,126	17,709
Bendigo Urban Area—					
Bendigo City .. ..	28,726	30,195	8,364	9,110	8,032
Eaglehawk Borough ..	4,696	4,926	1,404	1,511	3,584
Marong Shire (Part) ..	1,707	2,527	457	659	1,005
Strathfieldsaye Shire (Part)	1,789	2,679	501	745	1,683
Total—Bendigo Urban Area	36,918	40,327	10,726	12,025	14,304
Latrobe Valley Urban Area—					
Yallourn Works Area ..	5,580	5,010	1,213	1,192	8,653
Moe Borough (Moe (N.M.) and Newborough (N.M.) in 1954) .. ..	12,427	15,463	3,132	3,727	5,286
Traralgon Borough (Traral- gon (N.M.) in 1954) ..	8,845	12,300	2,375	3,067	4,930
Morwell (N.M.) .. ..	9,040	14,833	2,289	3,582	5,504
Yallourn North (N.M.) ..	1,457	1,867	398	449	320
Total—Latrobe Valley Urban Area .. ..	37,349	49,473	9,407	12,017	24,693

For footnotes see page 121. For definition of "N.M." see page 124.

\* The Melbourne Metropolitan Area was, for statistical purposes, revised and enlarged on 1st January, 1961. Portion of the Shire of Berwick and additional portions of the Shires of Whittlesea and Fern Tree Gully were included and that portion of the Shire of Melton which was formerly in the Metropolitan Area was excluded.

The following portions of the Shires of Berwick, Bulla, Eltham, Fern Tree Gully, Lillydale, and Whittlesea were included in the Melbourne Metropolitan Area at 30th June, 1961:—

*Berwick:* Berwick Riding.

*Bulla:* Part of Mickleham Riding.

*Eltham:* West and Eltham Ridings and part of Northern Riding.

*Fern Tree Gully:* North, Centre and East Ridings and part of South Riding.

*Lillydale:* Western, North, and Southern Ridings.

*Whittlesea:* Thomastown Riding and part of Morang Riding.

The remaining portions of these Shires were in the Central Division.

† In 1957 the Shire of Werribee was reduced and re-defined, the Altona Riding being constituted as the Shire of Altona.

‡ Parts of the Metropolitan portion of the Shire of Broadmeadows were annexed to the Shires of Bulla (1955 and 1958) and Whittlesea (1955). Prior to these transfers both the Shires of Bulla and Whittlesea were entirely outside the Metropolitan Area.

The entire Extra-Metropolitan portion of the Shire of Broadmeadows (Central Division) was annexed to the Shire of Kilmore in 1955. Prior to this transfer the Shire of Kilmore was entirely in the North-Central Division.

Broadmeadows was proclaimed a city in 1956.

§ The Shire of Lillydale was reduced and re-defined in 1960, the annexed portion becoming the Shire of Croydon.

¶ The Shire of Dandenong was reduced and re-defined in 1955, the annexed portion becoming the Shire of Springvale and Noble Park. Dandenong was proclaimed a city in 1959 and the Shire of Springvale and Noble Park was proclaimed the City of Springvale in 1961.

|| In 1960 the Extra-Metropolitan portion of the Shire of Frankston and Hastings was annexed into the new Shire of Hastings. The Metropolitan portion of the Shire of Frankston and Hastings became the new Shire of Frankston.

\*\* In 1959 part of the Shire of Keilor was annexed to the Shire of Melton. Prior to this transfer the Shire of Melton was entirely outside the Metropolitan Area. Part of the Shire of Melton was annexed by the Shire of Bulla in 1959.

Keilor was proclaimed a city in 1961.

†† Parts of the Shires of Mulgrave, Springvale and Noble Park, and the City of Moorabbin were transferred to the City of Oakleigh in 1959.

The Shire of Mulgrave was proclaimed the City of Waverley in 1961.

‡‡ Ringwood was proclaimed a city in 1960.

§§ The following changes in Non-Metropolitan Local Government Areas took place between the Censuses of 1954 and 1961:—

*New Local Government Areas Constituted:*

Moe Borough by annexation of portion of Narracan Shire (1955); Nathalia Shire, by annexation of portion of Numurkah Shire (1957); Myrtleford Shire, by annexation of portion of Bright Shire (1960); Hastings Shire, by annexation of portions of Flinders Shire and Frankston and Hastings Shire (1960); and Traralgon Borough, by annexation of portion of Traralgon Shire (1961).

*Local Government Areas Amalgamated:*

Inglewood Borough and Shire of Korong united under name of Shire of Korong (1961).

*Annexation of Portion of Shires:*

Kara Kara Shire to Donald Shire (1955); Warrnambool Shire to Warrnambool City (1955); Waranga Shire to Goulburn Shire (1956); McIvor Shire to Goulburn Shire (1956); Benalla Shire to Benalla Borough (1956); Eltham Shire to Healesville Shire (1958); Romsey Shire to Kilmore Shire (1958); Portland Shire to Portland Town (1958); Melton Shire to Bulla Shire (1959); Ararat Shire to Ararat City (1960); South Barwon Shire to Newtown and Chilwell City (1960); Dundas Shire to Wannon Shire (1961); Yea Shire to Seymour Shire (1961); and Oxley Shire to Benalla Shire (1961).

*Changes in Status:*

Declared Cities: Wangaratta (1959); Colac (1960); Maryborough (1961).

Declared Towns: Stawell (1957); Camperdown (1959).

The following table gives the population and dwellings in metropolitan, other urban, and rural areas of the State. The urban areas of Geelong, Ballarat, and Bendigo are shown, also the sum of the urban components of the Latrobe Valley Area. The remainder of cities, towns, and boroughs in the State have been grouped with non-municipal towns of 1,000 or more according to size of population.

### VICTORIA—SUMMARY OF POPULATION

Victoria	Population at Census, 1961	Dwellings at Census, 1961	
		Occupied	Unoccupied
Metropolitan .. .. .	1,911,895	524,608	16,833
Urban—			
Geelong Urban Area .. .. .	91,777	24,586	663
Ballarat Urban Area .. .. .	54,880	14,493	633
Latrobe Valley-Urban .. .. .	49,473	11,675	342
Bendigo Urban Area .. .. .	40,327	11,518	507
	236,457	62,272	2,145
Other Urban—			
Population Exceeding 10,000 (4) .. .. .	55,345	14,507	518
" 7,500 to 9,999 (6) .. .. .	59,578	13,492	576
" 5,000 to 7,499 (11) .. .. .	62,934	19,002	849
" 4,000 to 4,999 (3) .. .. .	13,228	3,456	558
" 3,000 to 3,999 (14) .. .. .	47,042	12,464	2,214
" 2,000 to 2,999 (18) .. .. .	44,146	12,210	2,646
" 1,000 to 1,999 (38) .. .. .	55,200	15,230	3,457
	337,473	90,361	10,818
Rural† .. .. .	439,679	113,288	17,593
Migratory .. .. .	4,609	..	..
Total .. .. .	2,930,113	790,529	47,389

NOTE.—Figures in brackets represent the number of urban localities in the group.  
 † Includes Borough of Clunes—population 836.

The above table shows that urban localities of less than 5,000 in population and rural areas in general had a markedly higher proportion of unoccupied dwellings at the date of the Census 1961 than did the more populated areas of the State. Below is an analysis of unoccupied dwellings in metropolitan, urban, and rural areas according to the reason why they were unoccupied :—

### VICTORIA—UNOCCUPIED DWELLINGS AND REASONS WHY UNOCCUPIED, CENSUS, 1961\*

Area	Reasons Why Unoccupied					Total
	For Sale or Renting	Holiday Home, "Week-end", Seasonal Quarters	Occupants Temporarily Absent	To be Demolished, Condemned	Other and Not Stated	
Metropolitan Area .. .. .	4,555	1,671	6,386	427	3,794	16,833
Urban Areas—						
Geelong .. .. .	158	3	304	17	181	663
Ballarat .. .. .	127	..	360	30	116	633
Latrobe Valley .. .. .	137	..	155	4	46	342
Bendigo .. .. .	80	9	260	19	139	507
Other Urban .. .. .	1,181	5,842	2,297	128	1,370	10,818
Rural Areas .. .. .	1,466	7,850	3,735	576	3,966	17,593
Total .. .. .	7,704	15,375	13,497	1,201	9,612	47,389

\* For definitions see pages 367-68.

The following is a list of those extra-metropolitan localities in Victoria which contained a population of 1,000 persons or more at the Census of 1961 :—

### VICTORIA—POPULATION OF EXTRA-METROPOLITAN LOCALITIES

Locality	Municipal Status at 30th June, 1961	Population at Census, 1954	Population at Census, 1961	Locality	Municipal Status at 30th June, 1961	Population at Census, 1954	Population at Census, 1961
Alexandra ..	NM	1,712	1,945	Kilmore ..	NM	1,474	1,363
Ararat ..	C	7,414	7,934	Koroit ..	B	1,401	1,466
Bacchus Marsh	NM	2,825	3,288	Korumburra ..	NM	2,858	3,237
Bairnsdale ..	NM*	5,718	7,427	Kyabram ..	B	3,335	3,936
Ballaarat ..	C	39,945	41,037	Kyneton ..	NM	3,232	3,366
Beaufort ..	NM	1,281	1,240	Lakes Entrance	NM	1,252	1,602
Beechworth ..	NM	3,153	3,508	Laverton ..	NM	†	4,152
Benalla ..	B	6,045	8,260	Leongatha ..	NM	2,304	2,755
Bendigo ..	C	28,726	30,195	Lorne ..	NM	979	1,080
Broadford ..	NM	1,451	1,678	Maffra ..	NM	3,161	3,404
Camperdown ..	T	3,205	3,446	Maldon ..	NM*	857	1,071
Casterton ..	NM	2,391	2,442	Mansfield ..	NM	1,861	1,944
Castlemaine ..	T	6,577	7,216	Maryborough	C	6,827	7,235
Charlton ..	NM	1,408	1,527	Merbein ..	NM	1,768	1,737
Cobram ..	NM	1,695	2,538	Mildura ..	C	10,972	12,279
Cohuna ..	NM	1,542	1,815	Moe ..	B†	8,770	15,463
Colac ..	C	8,032	9,252	Mooroopna ..	NM	1,796	2,505
Coleraine ..	NM	1,393	1,503	Mornington ..	NM*	3,589	4,886
Corryong ..	NM	†	1,129	Mortlake ..	NM	1,048	1,297
Creswick ..	NM	1,606	1,730	Morwell ..	NM*	9,040	14,833
Daylesford ..	B	3,216	2,776	Mount Beauty	NM	†	1,509
Dimboola ..	NM	1,814	1,923	Murtoa ..	NM	1,132	1,135
Donald ..	NM	1,480	1,517	Myrtleford ..	NM	1,538	2,123
Dromana ..	NM	†	1,151	Nathalia ..	NM	1,046	1,276
Drouin ..	NM	2,104	2,511	Newtown and Chilwell	C	11,191	11,788
Eaglehawk ..	B	4,696	4,926	Nhill ..	NM	2,208	2,233
Echuca ..	B	5,405	6,443	Numurkah ..	NM	2,195	2,687
Euroa ..	NM	2,657	3,040	Ocean Grove	NM	†	1,609
Geelong ..	C	20,034	18,019	Orbost ..	NM	2,214	2,613
Geelong West	C	17,313	17,681	Ouyen ..	NM	1,426	1,695
Hamilton ..	C	8,507	9,495	Pakenham East	NM	1,110	1,408
Healesville ..	NM*	2,707	2,687	Portarlington	NM	†	1,003
Heathcote ..	NM	1,273	1,287	Port Fairy ..	B	2,265	2,426
Heyfield ..	NM	†	1,917	Portland ..	T	4,759	6,014
Horsham ..	C	7,767	9,240	Queenscliffe ..	B	2,551	2,659
Irymple ..	NM	1,068	1,133	Red Cliffs ..	NM	2,361	2,440
Kerang ..	NM	3,227	3,727	Rochester ..	NM	1,791	1,965

VICTORIA—POPULATION OF EXTRA-METROPOLITAN LOCALITIES—  
*continued*

Locality	Municipal Status at 30th June, 1961	Population at Census, 1954	Population at Census, 1961	Locality	Municipal Status at 30th June, 1961	Population at Census, 1954	Population at Census, 1961
Rosebud ..	NM*	1,694	3,726	Trafalgar ..	NM	1,537	1,774
Rushworth ..	NM	976	1,077	Traralgon ..	B	8,845	12,300
Rutherglen ..	NM	1,370	1,292	Wangaratta ..	C	10,715	13,784
Rye ..	NM	†	1,338	Warburton ..	NM*	1,320	1,630
Sale ..	C	6,537	7,899	Warracknabeal	NM	3,009	3,061
Sebastopol ..	B	3,265	4,663	Warragul ..	NM	5,324	6,405
Seymour ..	NM*	3,736	5,104	Warrnambool	C	10,850	15,702
Shepparton ..	C	10,848	13,580	Werribee ..	NM	4,335	5,398
Sorrento ..	NM*	1,823	2,152	Wodonga ..	NM	5,259	7,498
St. Arnaud ..	T	3,037	3,150	Wonthaggi ..	B	4,461	4,190
Stawell ..	T	5,463	5,506	Woodend ..	NM	1,093	1,224
Sunbury ..	NM	2,385	3,131	Yallourn North	NM	1,457	1,867
Swan Hill ..	B	5,197	6,186	Yallourn Works Area ..	§	5,580	5,010
Tatura ..	NM	1,929	2,166	Yarram ..	NM	1,800	2,053
Terang ..	NM	2,365	2,380	Yarrawonga ..	NM	2,953	3,022
Torquay ..	NM	†	1,097	Yea ..	NM	1,131	1,113

NOTE.—C = City; T = Town; B = Borough; NM = Non-Municipal Town.

Prior to a Census the boundaries of certain towns not separately incorporated as local government areas are delineated for statistical purposes, and are termed "Non-municipal Towns." Only those of 1,000 persons or more at the 1961 Census are listed above.

\* The boundaries of these "N.M. Towns" were amended in 1961.

† Not a "N.M. Town" in 1954.

‡ Moe, a "N.M. Town" in 1954, was created a Borough in 1955.

§ The municipal status of the Yallourn Works Area is explained on page 374.

The next table shows the age distribution of the population of Victoria at the Censuses of 1954 and 1961:—

VICTORIA—AGE DISTRIBUTION OF THE POPULATION

Age Last Birthday (Years)	Census, 1954			Census, 1961			Increase of Persons 1954 to 1961
	Males	Females	Persons	Males	Females	Persons	
0-4 ..	132,184	126,151	258,335	157,536	149,999	307,535	49,200
5-9 ..	122,204	116,653	238,857	148,193	140,564	288,757	49,900
10-14 ..	92,175	88,632	180,807	142,114	135,734	277,848	97,041
15-19 ..	78,776	74,945	153,721	112,555	106,809	219,364	65,643
20-24 ..	83,734	77,196	160,930	100,751	94,325	195,076	34,146
25-29 ..	101,392	93,078	194,470	97,160	89,565	186,725	-7,745
30-34 ..	100,487	95,108	195,595	109,792	99,751	209,543	13,948
35-39 ..	87,819	85,875	173,694	111,929	105,928	217,857	44,163
40-44 ..	88,548	84,036	172,584	95,120	92,504	187,624	15,040
45-49 ..	78,969	73,389	152,358	92,443	89,382	181,825	29,467
50-54 ..	69,714	67,798	137,512	81,322	77,525	158,847	21,335
55-59 ..	55,039	59,817	114,856	66,826	64,904	131,730	16,874
60-64 ..	50,136	58,306	108,442	53,990	61,040	115,030	6,588
65-69 ..	37,824	45,334	83,158	41,897	53,858	95,755	12,597
70-74 ..	25,032	33,195	58,227	31,264	42,356	73,620	15,393
75-79 ..	15,089	21,881	36,970	18,128	27,236	45,364	8,339
80-84 ..	7,851	12,603	20,454	8,919	15,313	24,232	3,778
85-89 ..	3,267	5,466	8,733	3,417	6,663	10,080	1,347
90-94 ..	783	1,563	2,346	908	1,901	2,809	463
95-99 ..	72	204	276	123	328	451	175
100 and over ..	4	12	16	8	33	41	25
Total ..	1,231,099	1,221,242	2,452,341	1,474,395	1,455,718	2,930,113	477,772
Under 21 ..	440,629	420,827	861,456	581,052	553,252	1,134,304	272,848
21-64 ..	700,548	680,157	1,380,705	1,380,705	754,778	1,543,457	162,752
65 and over ..	89,922	120,258	210,180	104,664	147,688	252,352	42,172
Total ..	1,231,099	1,221,242	2,452,341	1,474,395	1,455,718	2,930,113	477,772

NOTE.—Minus sign (—) denotes decrease.

The Censuses of 1954 and 1961 show the nationality of the population as follows :—

VICTORIA—NATIONALITY OF THE POPULATION

Nationality	Census, 1954			Census, 1961		
	Males	Females	Persons	Males	Females	Persons
<b>British*—</b>						
Born in Australia	1,020,836	1,062,543	2,083,379	1,160,934	1,199,397	2,360,331
Born outside Australia ..	127,950	104,469	232,419	198,296	165,639	363,935
<b>Total British</b>	<b>1,148,786</b>	<b>1,167,012</b>	<b>2,315,798</b>	<b>1,359,230</b>	<b>1,365,036</b>	<b>2,724,266</b>
<b>Foreign—</b>						
Dutch ..	9,255	7,035	16,290	15,037	12,541	27,578
German ..	6,078	5,414	11,492	13,442	10,453	23,895
Greek ..	4,037	2,241	6,278	14,704	13,368	28,072
Hungarian ..	1,683	1,118	2,801	3,122	2,302	5,424
Italian ..	23,225	11,981	35,206	37,565	30,831	68,396
Latvian, Lithuanian, and Estonian ..	5,203	4,571	9,774	1,384	1,054	2,438
Polish ..	9,370	6,889	16,259	4,535	3,629	8,164
Ukrainian ..	3,185	2,453	5,638	1,028	771	1,799
Yugoslavian ..	3,450	2,045	5,495	6,569	3,822	10,391
Other (including Stateless) ..	16,827	10,483	27,310	17,779	11,911	29,690
<b>Total Foreign</b>	<b>82,313</b>	<b>54,230</b>	<b>136,543</b>	<b>115,165</b>	<b>90,682</b>	<b>205,847</b>
<b>Grand Total..</b>	<b>1,231,099</b>	<b>1,221,242</b>	<b>2,452,341</b>	<b>1,474,395</b>	<b>1,455,718</b>	<b>2,930,113</b>

\* All persons of individual citizenship status who by virtue of the *Nationality and Citizenship Act 1948* are deemed to be British subjects. For purposes of this table Irish nationality is included with British.

The following table shows the birthplace of the population at the Censuses of 1954 and 1961 :—

VICTORIA—BIRTHPLACE OF THE POPULATION

Birthplace	Census, 1954			Census, 1961		
	Males	Females	Persons	Males	Females	Persons
Australia .. .. .	1,020,836	1,062,543	2,083,379	1,160,934	1,199,397	2,360,331
New Zealand .. ..	5,456	5,675	11,131	5,622	5,848	11,470
<b>Europe—</b>						
United Kingdom and Republic of Ireland ..	92,915	78,813	171,728	108,744	97,785	206,529
Germany .. .. .	11,029	10,743	21,772	20,720	18,568	39,288
Greece .. .. .	5,009	2,636	7,645	17,239	14,421	31,660
Italy .. .. .	27,709	14,720	42,429	51,863	38,966	90,829
Malta .. .. .	4,469	2,662	7,131	10,220	7,631	17,851
Netherlands .. ..	9,188	6,808	15,996	20,140	16,084	36,224
Poland .. .. .	12,836	8,592	21,428	13,807	9,987	23,794
Other .. .. .	26,896	18,716	45,612	43,236	30,304	73,540
<b>Total Europe</b> ..	<b>190,051</b>	<b>143,690</b>	<b>333,741</b>	<b>285,969</b>	<b>233,746</b>	<b>519,715</b>
Other Birthplaces ..	14,756	9,334	24,090	21,870	16,727	38,597
<b>Grand Total</b> ..	<b>1,231,099</b>	<b>1,221,242</b>	<b>2,452,341</b>	<b>1,474,395</b>	<b>1,455,718</b>	<b>2,930,113</b>

The next table shows the period of residence in Australia, at Censuses of 1954 and 1961, of persons who were not born in Australia :—

**VICTORIA—PERIOD OF RESIDENCE IN AUSTRALIA OF PERSONS WHO WERE NOT BORN IN AUSTRALIA**

Number of Completed Years of Residence	Census, 1954			Census, 1961		
	Males	Females	Persons	Males	Females	Persons
Under 1 ..	18,237	13,343	31,580	24,865	17,287	42,152
1 .. ..	10,416	9,128	19,544	16,375	13,505	29,880
2 .. ..	22,428	13,659	36,087	16,286	15,462	31,748
3 .. ..	24,115	17,329	41,444	13,436	15,438	28,874
4 .. ..	26,517	19,140	45,657	15,080	15,669	30,749
5 .. ..	19,547	14,009	33,556	20,669	17,156	37,825
6 .. ..	5,975	4,483	10,458	19,914	15,788	35,702
Under 7 ..	127,235	91,091	218,326	126,625	110,305	236,930
7 and under 14 ..	79,764	64,811	144,575	116,150	86,253	202,403
14 and over ..				64,670	54,723	119,393
Not Stated ..	3,264	2,797	6,061	6,016	5,040	11,056
Born outside Australia ..	210,263	158,699	368,962	313,461	256,321	569,782
Born in Australia	1,020,836	1,062,543	2,083,379	1,160,934	1,199,397	2,360,331
Total ..	1,231,099	1,221,242	2,452,341	1,474,395	1,455,718	2,930,113

The following table shows the population of Victoria classified according to conjugal condition at the Censuses of 1954 and 1961 :—

**VICTORIA—CONJUGAL CONDITION OF POPULATION**

Conjugal Condition	Census, 1954			Census, 1961		
	Males	Females	Persons	Males	Females	Persons
Never Married—						
Under Fifteen Years of Age	346,563	331,436	677,999	447,843	426,297	874,140
Fifteen Years of Age and over	257,342	196,891	454,233	303,306	222,774	526,080
Total—Never Married ..	603,905	528,327	1,132,232	751,149	649,071	1,400,220
Married .. ..	570,204	564,688	1,134,892	664,984	660,462	1,325,446
Married but Permanently Separated .. ..	15,214	18,144	33,358	18,302	21,927	40,229
Widowed .. ..	30,906	99,058	129,964	31,497	113,940	145,437
Divorced .. ..	7,250	9,062	16,312	8,463	10,318	18,781
Not Stated .. ..	3,620	1,963	5,583	*	*	*
Total .. ..	1,231,099	1,221,242	2,452,341	1,474,395	1,455,718	2,930,113

\* In processing the 1961 Census data, a conjugal condition was allocated prior to tabulation in all instances where this information was not stated.



The following table shows the religion of the population at Censuses of 1954 and 1961 :—

### VICTORIA—RELIGION OF THE POPULATION

Religion	Census, 1954			Census, 1961		
	Males	Females	Persons	Males	Females	Persons
<b>CHRISTIAN—</b>						
Baptist .. .. .	16,084	18,232	34,316	18,225	20,402	38,627
Brethren .. .. .	1,479	1,782	3,261	1,558	1,799	3,357
Catholic, Roman* .. .	99,128	82,083	181,211	134,535	116,287	250,822
Catholic* .. .. .	188,492	194,951	383,443	254,236	257,676	511,912
Churches of Christ .. .	15,797	17,811	33,608	17,883	20,056	37,939
Church of England .. .	413,591	418,882	832,473	443,024	450,136	893,160
Congregational .. .. .	5,417	6,505	11,922	5,552	6,552	12,104
Greek Orthodox .. .. .	12,219	7,902	20,121	29,759	25,064	54,823
Lutheran .. .. .	11,785	11,108	22,893	18,267	17,101	35,368
Methodist .. .. .	122,377	130,425	252,802	134,040	141,165	275,205
Presbyterian .. .. .	158,811	167,611	326,422	179,466	187,880	367,346
Protestant, Undefined .. .	18,787	18,966	37,753	20,349	19,592	39,941
Salvation Army .. .. .	5,291	6,100	11,391	6,323	7,274	13,597
Seventh Day Adventist .. .	1,906	2,562	4,468	2,559	3,161	5,720
Other .. .. .	6,967	7,981	14,948	11,858	13,032	24,890
<b>Total Christian .. .. .</b>	<b>1,078,131</b>	<b>1,092,901</b>	<b>2,171,032</b>	<b>1,277,634</b>	<b>1,287,177</b>	<b>2,564,811</b>
<b>NON-CHRISTIAN—</b>						
Hebrew .. .. .	12,211	11,805	24,016	14,993	14,939	29,932
Other .. .. .	1,830	453	2,283	1,962	911	2,873
<b>Total Non-Christian .. .</b>	<b>14,041</b>	<b>12,258</b>	<b>26,299</b>	<b>16,955</b>	<b>15,850</b>	<b>32,805</b>
Indefinite .. .. .	2,579	2,239	4,818	3,637	3,014	6,651
No Religion .. .. .	4,564	2,073	6,637	7,081	3,715	10,796
No Reply .. .. .	131,784	111,771	243,555	169,088	145,962	315,050
<b>Grand Total .. .. .</b>	<b>1,231,099</b>	<b>1,221,242</b>	<b>2,452,341</b>	<b>1,474,395</b>	<b>1,455,718</b>	<b>2,930,113</b>

\* So described on individual census schedules.

In the following table the male and female populations of Victoria are classified according to the industry in which they are usually engaged :—

### VICTORIA—INDUSTRY OF THE POPULATION AT CENSUSES OF 1954 AND 1961

Industry Group	Census, 1954			Census, 1961		
	Males	Females	Persons	Males	Females	Persons
Primary Production .. .	108,124	8,376	116,500	99,820	9,964	109,784
Mining and Quarrying .. .	4,463	123	4,586	4,690	201	4,891
Manufacturing .. .. .	252,232	89,172	341,404	280,465	99,226	379,691
Electricity, Gas, Water, and Sanitary Services (Production, Supply, and Maintenance) .. .. .	24,116	1,491	25,607	30,469	2,033	32,502
Building and Construction .. .	84,401	1,067	85,468	99,543	2,122	101,665
Transport and Storage and Communication .. .. .	76,478	9,022	85,500	84,033	10,414	94,447
Finance and Property .. .. .	18,080	9,237	27,317	25,475	16,343	41,818
Commerce .. .. .	109,675	51,909	161,584	126,447	63,825	190,272
Public Authority ( <i>n.e.l.</i> ) and Defence Services .. .. .	36,135	8,593	44,728	35,775	9,299	45,074
Community and Business Services (Incl. Professional)* .. .	37,397	43,381	80,778	51,497	64,250	115,747
Amusements, Hotels and Other Accommodation, Cafes, Personal Service, &c. .. .	28,306	32,826	61,132	31,896	36,926	68,822
Other Industries and Industry Inadequately Described or Not Stated .. .. .	7,541	2,249	9,790	16,990	8,308	25,298
<b>Total in Work Force .. .</b>	<b>786,948</b>	<b>257,446</b>	<b>1,044,394</b>	<b>887,100</b>	<b>322,911</b>	<b>1,210,011</b>
<b>Persons Not in Work Force .. .</b>	<b>444,151</b>	<b>963,796</b>	<b>1,407,947</b>	<b>587,295</b>	<b>1,132,807</b>	<b>1,720,102</b>
<b>Grand Total .. .. .</b>	<b>1,231,099</b>	<b>1,221,242</b>	<b>2,452,341</b>	<b>1,474,395</b>	<b>1,455,718</b>	<b>2,930,113</b>

\* Includes police, fire brigades, hospitals, medical and dental services, education, and business services such as consultant engineering and surveying, accountancy and auditing, industrial and trade associations, advertising, &c.

## Population Estimates

In the following table is given the estimated population of each Australian State at 31st December, 1961 :—

**AUSTRALIA—ESTIMATED POPULATION OF STATES AND TERRITORIES AT 31ST DECEMBER, 1961**

State or Territory	Area in Square Miles	Estimated Population at 31st December, 1961	Persons to the Square Mile	Proportion in Each State or Territory
New South Wales .. ..	309,433	3,951,635	12·77	per cent. 37·27
<b>Victoria .. ..</b>	<b>87,884</b>	<b>2,949,354</b>	<b>33·56</b>	<b>27·81</b>
Queensland .. ..	667 000	1,524,784	2·29	14·38
South Australia .. ..	380,070	979,792	2·58	9·24
Western Australia .. ..	975 920	746,174	0·76	7·04
Tasmania .. ..	26 215	364,134	13·89	3·43
Northern Territory .. ..	523 620	25,967	0·05	0·24
Australian Capital Territory* .. ..	939	62,091	66·12	0·59
<b>Australia .. ..</b>	<b>2,971,081</b>	<b>10,603,931</b>	<b>3·57</b>	<b>100·00</b>

\* Includes Jervis Bay.

The following table shows the estimated population of Victoria from 1836 to 1961 :—

**VICTORIA—ESTIMATED POPULATION**

Year	Estimated Population, 31st December		
	Males	Females	Total
1836 (25th May) .. ..	142	35	177
1840 .. ..	7,254	3,037	10,291
1850 .. ..	45,495	30,667	76,162
1860 .. ..	330,302	207,932	538,234
1870 .. ..	397,230	326,695	723,925
1880 .. ..	450,558	408,047	858,605
1890 .. ..	595,519	538,209	1,133,728
1900 .. ..	601,773	594,440	1,196,213
1910 .. ..	646,482	654,926	1,301,408
1920 .. ..	753,803	774,106	1,527,909
1930 .. ..	892,422	900,183	1,792,605
1940 .. ..	947,037	967,881	1,914,918
1950 .. ..	1,114,497	1,122,685	2,237,182
1951 .. ..	1,150,009	1,149,529	2,299,538
1952 .. ..	1,189,262	1,177,457	2,366,719
1953 .. ..	1,212,060	1,203,975	2,416,035
1954 .. ..	1,245,228	1,232,758	2,477,986
1955 .. ..	1,283,946	1,262,386	2,546,332
1956 .. ..	1,321,478	1,296,634	2,618,112
1957 .. ..	1,350,935	1,329,620	2,680,555
1958 .. ..	1,382,585	1,362,580	2,745,165
1959 .. ..	1,416,347	1,395,082	2,811,429
1960 .. ..	1,455,696	1,432,594	2,888,290
1961 .. ..	1,482,130	1,467,224	2,949,354

## Migration

## Oversea Arrivals and Departures

Oversea arrivals and departures in each State, during the years 1957 to 1961, are shown in the following table :—

**AUSTRALIA—OVERSEA ARRIVALS AND DEPARTURES  
BY STATES**

Year	New South Wales	Victoria	Queens-land	South Australia	Western Australia	Tasmania	Northern Territory	Australia
<b>ARRIVALS</b>								
1957..	141,279	62,613	7,209	6,792	13,754	49	1,632	233,328
1958..	135,396	63,337	8,779	7,373	13,993	25	1,361	230,264
1959..	140,536	77,226	11,113	8,563	14,693	35	1,730	253,896
1960..	176,532	84,851	11,596	7,703	16,161	81	2,237	299,161
1961..	195,573	73,939	15,482	8,338	17,152	119	2,487	313,090
<b>DEPARTURES</b>								
1957..	113,085	22,201	6,953	3,153	7,658	176	1,370	154,596
1958..	113,942	27,695	8,433	4,080	9,347	244	1,157	164,898
1959..	116,190	32,966	11,321	4,940	10,019	389	1,280	177,105
1960..	143,898	34,828	11,781	5,959	10,801	237	1,522	209,026
1961..	174,422	43,132	14,114	5,495	12,246	258	1,900	251,567

NOTE.—The above table indicates the State or Territory where passengers disembarked from or embarked on the ship or aircraft. Because numbers of passengers use interstate transport to commence or complete their journey, the figures do not indicate the precise effect on the population of the States of movements to and from overseas countries.

The following table shows details of permanent and long term movement and short term movement to and from Australia and Victoria for the years 1957 to 1961 :—

**AUSTRALIA AND VICTORIA—OVERSEA MIGRATION**

Year	Australia				Victoria*			
	Permanent and Long Term Movement†	Short Term Movement		Total	Permanent and Long Term Movement†	Short Term Movement		Total
		Australian Residents Returning or Departing Temporarily	Visitors			Australian Residents Returning or Departing Temporarily	Visitors	
<b>ARRIVALS</b>								
1957..	118,695	56,017	58,616	233,328	50,462	8,133	4,018	62,613
1958..	109,857	59,065	61,342	230,264	47,567	9,887	5,883	63,337
1959..	124,022	61,754	68,120	253,896	57,215	11,577	8,434	77,226
1960..	139,371	75,167	84,623	299,161	63,671	12,546	8,634	84,851
1961..	127,586	86,208	99,296	313,090	50,197	14,438	9,304	73,939
<b>DEPARTURES</b>								
1957..	41,073	53,438	60,085	154,596	9,588	8,285	4,328	22,201
1958..	44,978	58,888	61,032	164,898	11,188	10,880	5,627	27,695
1959..	40,444	64,631	72,030	177,105	11,021	13,607	8,338	32,966
1960..	46,595	77,761	84,670	209,026	12,288	14,337	8,203	34,828
1961..	59,147	89,880	102,540	251,567	17,455	16,077	9,600	43,132

\* See note to preceding table.

† "Permanent and Long Term" movement relates to persons arriving who state that they intend to reside in Australia for a period of one year or more, and to persons departing who state that they intend to reside abroad for a period of one year or more.

Oversea arrivals and departures in Victoria, according to country of embarkation or disembarkation, are shown in the following tables for the period 1957 to 1961 :—

VICTORIA—OVERSEA ARRIVALS

Place of Embarkation	1957	1958	1959	1960	1961
<b>Commonwealth Countries—</b>					
United Kingdom and Ireland ..	18,850	20,958	23,200	22,259	20,443
Canada .. .. .	85	208	394	420	692
Ceylon .. .. .	304	612	605	521	604
Fiji .. .. .	34	301	444	149	110
Hong Kong .. .. .	290	224	250	298	795
India .. .. .	172	339	376	546	290
Malta .. .. .	1,084	1,032	1,380	1,471	1,514
Malaya .. .. .	20	127	110	183	95
Nauru .. .. .	338	296	307	390	322
New Guinea .. .. .	29	50	38	26	24
New Zealand .. .. .	3,708	5,148	7,317	8,917	9,871
Pakistan .. .. .	..	22	45	41	41
Papua .. .. .	8	17	14	23	27
Singapore .. .. .	292	1,247	2,168	1,528	1,545
Other Commonwealth Countries ..	621	1,919	921	1,348	682
<b>Total Commonwealth Countries</b>	<b>25,835</b>	<b>32,500</b>	<b>37,569</b>	<b>38,120</b>	<b>37,055</b>
<b>Foreign—</b>					
Egypt .. .. .	372	234	128	168	305
France .. .. .	15	19	820	98	116
Germany .. .. .	6,121	4,986	8,562	12,728	5,012
Greece .. .. .	3,469	2,869	3,338	5,417	5,197
Indonesia .. .. .	65	75	131	149	108
Italy .. .. .	16,263	13,572	15,951	19,707	17,403
Japan .. .. .	152	155	244	434	719
Netherlands .. .. .	4,845	4,151	4,813	5,064	3,559
Republic of South Africa ..	*	*	*	*	1,005
United States of America ..	211	683	999	557	944
Other Foreign Countries ..	5,265	4,093	4,671	2,409	2,516
<b>Total Foreign Countries ..</b>	<b>36,778</b>	<b>30,837</b>	<b>39,657</b>	<b>46,731</b>	<b>36,884</b>
<b>Total Commonwealth and Foreign .. .. .</b>	<b>62,613</b>	<b>63,337</b>	<b>77,226</b>	<b>84,851</b>	<b>73,939</b>

\* See footnote on following page.

## VICTORIA—OVERSEA DEPARTURES

Place of Disembarkation	1957	1958	1959	1960	1961
<b>Commonwealth Countries—</b>					
United Kingdom and Ireland ..	9,852	10,090	11,006	11,449	13,017
Canada .. .. .	168	138	326	523	538
Ceylon .. .. .	241	344	367	261	291
Fiji .. .. .	14	245	477	126	107
Hong Kong .. .. .	111	96	88	121	136
India .. .. .	235	280	269	307	332
Malta .. .. .	489	223	218	291	316
Malaya .. .. .	13	70	123	83	29
Nauru .. .. .	277	292	295	309	334
New Guinea .. .. .	31	60	23	39	8
New Zealand .. .. .	3,649	4,590	6,940	7,919	11,138
Pakistan .. .. .	1	21	19	18	21
Papua .. .. .	7	18	18	29	17
Singapore .. .. .	297	1,177	1,739	1,597	1,671
Other Commonwealth Countries	593	806	920	896	520
<b>Total Commonwealth Countries</b>	<b>15,978</b>	<b>18,450</b>	<b>22,828</b>	<b>23,968</b>	<b>28,475</b>
<b>Foreign—</b>					
Egypt .. .. .	53	15	41	101	109
France .. .. .	151	294	277	614	410
Germany .. .. .	260	202	294	353	395
Greece .. .. .	22	360	381	862	1,867
Indonesia .. .. .	28	73	131	145	189
Italy .. .. .	4,419	4,658	5,296	5,836	7,326
Japan .. .. .	270	282	341	471	740
Netherlands .. .. .	161	470	816	1,087	1,744
Republic of South Africa ..	*	*	*	*	445
United States of America ..	237	783	1,051	897	1,000
Other Foreign Countries ..	622	2,108	1,510	494	432
<b>Total Foreign Countries ..</b>	<b>6,223</b>	<b>9,245</b>	<b>10,138</b>	<b>10,860</b>	<b>14,657</b>
<b>Total Commonwealth and Foreign .. .. .</b>	<b>22,201</b>	<b>27,695</b>	<b>32,966</b>	<b>34,828</b>	<b>43,132</b>

\* The Republic of South Africa was formed on 15th March, 1961. Prior to this date it was known as the Union of South Africa, and figures for the years 1957 to 1960 are included under "Other Commonwealth Countries".

The following table shows the nationalities of the permanent and long term arrivals and departures in 1961 whose State of disembarkation or embarkation was Victoria :—

VICTORIA—NATIONALITY OF PERMANENT AND LONG TERM ARRIVALS AND DEPARTURES, 1961

Nationality	Arrivals	Departures	Nationality	Arrivals	Departures
British ..	19,299	12,037	Japanese ..	8	..
Irish ..	257	167	Latvian ..	13	3
American (U.S.)	159	122	Lebanese ..	99	8
Austrian ..	893	267	Lithuanian ..	..	4
Belgian ..	396	2	Norwegian ..	54	17
Burmese ..	10	..	Polish* ..	702	50
Chinese ..	116	17	Portuguese ..	7	..
Czechoslovak ..	2	7	Romanian ..	71	2
Danish ..	81	90	Russian† ..	255	11
Dutch ..	2,257	1,390	Ukrainian ..	1	1
Estonian ..	1	..	Spanish ..	1,143	9
Finnish ..	161	91	Swedish ..	72	34
French ..	107	45	Swiss ..	303	60
German ..	4,412	1,218	Turkish ..	11	2
Greek ..	4,939	369	Yugoslav ..	1,628	35
Hungarian ..	150	37	Stateless‡ ..	1,681	46
Indonesian ..	19	30	Other ..	81	40
Israeli ..	70	15			
Italian ..	10,739	1,229	Total ..	50,197	17,455

\* Includes "Stateless" who were formerly Polish. † Includes "Stateless" who were formerly Russian. ‡ Includes "Stateless" with former nationality stated but other than Polish or Russian.

### Assisted Migration

The Migration Scheme in operation prior to the war ceased on the outbreak of war. During the war assisted immigration was discontinued, except in cases of close family reunion involving wives and dependent children, and other cases having exceptional features, for which special approval was required.

More than 910,000 migrants have received assisted passages to Australia since the Second World War. Migrants granted assisted passages pay only £10 Stg. each towards the cost of the passage to Australia, while children under nineteen years of age travel free.

### Naturalization

The *Nationality and Citizenship Act* 1948 commenced on Australia Day (26th January), 1949, and repealed all previous Commonwealth legislation on this subject. The most significant effect of the Act was the creation, for the first time, of the status of "Australian Citizen". In this respect, the Act was complementary to citizenship legislation passed or about to be passed by other countries of the British Commonwealth. All Australian citizens, and the citizens of other countries of the British Commonwealth, are declared to be British Subjects.

The following table shows the persons of each nationality granted naturalization certificates in Victoria during the five years 1957 to 1961 :—

**VICTORIA—PREVIOUS NATIONALITY OF PERSONS  
NATURALIZED**

Nationality	Number of Naturalization Certificates Granted					Total Granted 1957 to 1961	
	1957	1958	1959	1960	1961	No.	%
Albanian ..	39	23	23	29	27	141	0·24
Austrian ..	114	79	100	169	219	681	1·20
Belgian ..	11	15	12	11	8	57	0·10
Bulgarian ..	23	18	21	21	19	102	0·18
Czechoslovak ..	413	282	191	159	134	1,179	2·07
Danish ..	6	16	12	13	10	57	0·10
Dutch ..	725	1,093	1,258	2,065	1,557	6,698	11·77
Estonian ..	168	137	121	161	67	654	1·14
Finnish ..	1	11	5	24	13	54	0·10
French ..	25	26	47	45	39	182	0·32
German ..	386	537	849	1,669	1,018	4,459	7·83
Greek ..	323	323	536	1,170	1,405	3,757	6·60
Hungarian ..	553	390	253	340	191	1,727	3·04
Italian ..	1,326	2,079	2,953	4,136	3,222	13,716	24·09
Latvian ..	769	762	600	485	268	2,884	5·07
Lithuanian ..	430	340	329	267	129	1,495	2·62
Norwegian ..	15	15	15	18	17	80	0·14
Polish ..	1,989	1,691	1,952	1,822	907	8,361	14·69
Romanian ..	89	71	73	50	28	311	0·55
Russian ..	103	121	154	111	69	558	0·98
Swedish ..	3	8	13	11	8	43	0·07
Swiss ..	54	34	43	46	38	215	0·38
Ukrainian ..	623	649	751	723	342	3,088	5·42
Yugoslav ..	716	728	735	818	513	3,510	6·17
Other European ..	34	35	54	61	30	214	0·38
U.S. American ..	8	10	10	13	10	51	0·08
Other Nationalities	139	123	242	361	428	1,293	2·28
Stateless ..	498	312	204	244	102	1,360	2·39
<b>Total ..</b>	<b>9,583</b>	<b>9,928</b>	<b>11,556</b>	<b>15,042</b>	<b>10,818</b>	<b>56,927</b>	<b>100·00</b>

NOTE.—The above figures relate to the number of certificates granted, and do not represent the total number of persons affected by the certificates. In addition to the figures shown, there were 2,100 children in 1957, 2,474 in 1958, 3,071 in 1959, 4,231 in 1960, and 2,610 in 1961, affected by the grant of certificates.

**Aborigines in Victoria**

The estimated number of persons with a significant amount of aboriginal blood living in this State on 30th June, 1961, was 2,300, of whom eighteen were recorded as full-blood.

In 1957, following investigation by a Board of Inquiry appointed by the State Government to inquire into the operation of legislation under which aboriginal affairs were being administered, Parliament passed the present Aborigines Act. It repealed the law then existing and constituted the Aborigines Welfare Board to replace the former Board for the Protection of the Aborigines. The function of the Board is to promote the moral, physical, and intellectual welfare of aboriginal people living anywhere in Victoria, irrespective of their place of birth or degree of native blood, with a view to their assimilation into the general community.

After a preliminary survey of the conditions, the Board gave priority to plans for housing aboriginal people who were living in depressed camp settlements or in sub-standard metropolitan dwellings. Ten houses at Mooroopna and twelve at Robinvale have been completed, and are occupied by families transferred from river-bank camps. In addition, three houses at Drouin and three at Nowa Nowa have been provided by the Board and let to aboriginal families at nominal rentals. Land has been acquired at Dimboola and Orbost for similar projects, and fourteen houses will be available for occupation in those towns early next year.

The aborigines under the direct care of the Board are maintained on Lake Tyers Aboriginal Station, in East Gippsland, which is under the control of the resident manager. The number on the Station at 30th June, 1961, was 139, of whom eight were recorded as full-bloods.

The Board has arranged for women to be transferred from the Lake Tyers Aboriginal Station to the Bairnsdale District Hospital for confinement. Four male and five female children were born to part-aboriginal Lake Tyers parents at that hospital during the year.

Two part-aboriginal couples were married at the Station and three part-aborigines from the Station died at the Bairnsdale District Hospital in the same period.

Approximately 80 part-aborigines live on another aboriginal reserve at Framlingham, in the Western District, which is supervised by a local Welfare Committee, whose funds are subsidized by the Board. These aborigines are provided with Government cottages, for which they are charged a nominal rental, and maintain themselves with assistance from the Welfare Committee. Many of them receive social service allowances.

The Board derives its revenue almost wholly from an Annual Appropriation by Parliament and loan funds. The amount expended by the Board during 1960-61 was £90,000, plus £2,200 Child Endowment money administered on behalf of Lake Tyers Station endowees.



## Vital Statistics

### Introduction

#### *Registration of Births, Deaths, and Marriages*

The system of compulsory registration of births, deaths, and marriages in Victoria has been in force since 1853, and the registers contain all necessary information bearing on the family history of the people. The statutory duties under the Registration Acts are performed by the Government Statist, who has supervision over registration officers, registrars of marriages, and (so far as regards their registration duties) the clergymen who celebrate marriages. Copies of entries certified by the Government Statist or by an Assistant Government Statist or an authorized registration officer are *prima facie* evidence in the Courts of Australia of the facts to which they relate. At the Government Statist's Office there is kept for reference a complete collection of all registrations effected since 1st July, 1853, as well as originals or certified copies of all existing church records relating to earlier periods, as far back as 1837.

#### *Law Relating to Births, Deaths, and Marriages*

The various Acts relating to the registration of births, deaths, and marriages in Victoria were consolidated in 1958.

In November, 1959, a Bill was placed before Parliament to reorganize the system of registration of births and deaths in Victoria. This new legislation known as the *Registration of Births, Deaths, and Marriages Act 1959*, which came into operation on 1st October, 1960, was designed to allow registrations of births and deaths to be effected by post instead of through those persons who previously held office as Registrars of Births and Deaths. No alteration, however, has been made to the system of registration of marriages.

The repealed legislation providing for registration of births and deaths in Victoria had remained unchanged in principle since the year 1853, and was originally drafted from English legislation enacted in the year 1837.

Under this legislation the State was divided into districts which warranted the creation of an office of Registrar of Births and Deaths. Persons appointed to such office were citizens residing within the district and the method of appointment left much to be desired. Untrained persons, and in many cases persons totally unsuitable for such a position were appointed, which resulted in almost insurmountable administrative difficulties and unnecessarily added to costs.

The system required the responsible person to attend at a Registrar's Office for the purpose of giving information and to sign the registration entry, which had been prepared by the Registrar, of the event being registered. Under present day economic and industrial conditions, this procedure placed a monetary hardship and some

inconvenience upon the responsible person in view of loss of time from employment and in many instances the cost of travel to and from the Registrar's Office.

Under the present system, forms for giving of information for registration of births and deaths are made available to the public through maternity hospitals, funeral directors, institutions, Police Stations, and Collecting Agents. With the ready co-operation of maternity hospitals in the State, a form for registration of a birth is made available to either parent before the mother is discharged from hospital. This form, when completed, signed, and witnessed may be delivered or posted direct, to reach the Office of the Government Statist within 60 days of birth or delivered to a local Collecting Agent, whose duty it is to check the particulars contained in the form and post it to the Government Statist. The person responsible for the establishment in which a birth occurs is also required to forward notification of such event to the Government Statist.

Information forms relating to deaths are usually completed, under the supervision of a funeral director, by some relative with knowledge of the particulars to be registered. In cases of deaths reported to a Coroner, the required information is ascertained by the police. Every funeral director is required to notify particulars of burial, cremation or disposal of any dead body, and any medical practitioner in attendance during the last illness is obliged to submit a medical certificate concerning death, unless the case has been reported to a Coroner.

All registrations are now prepared in standard form in the Office of the Government Statist by officers specially trained in this particular type of work, and registrations are effected without the personal attendance of the informant. The original Information Form, which is a statutory document under the Regulations to the above Act, will be retained in volume form as a duplicate record of the event registered.

Provision is also made in the new legislation for the person giving particulars relating to a birth or death, to be notified that such particulars have been duly registered by posting to him an Extract from the entry. This provision is being carried out by photographing the first four columns of each registration entry and the column stating the name and address of the informant and posting the result in a window-faced envelope. This method was adopted for reasons of economy and lessens the possibility of altering the document. However, investigation on this matter by producing a document laminated in a plastic cover is proceeding.

The response and co-operation from persons placed under an obligation by the Act and from the general public is most encouraging. Although the system has been in operation for a short period and no conclusive statistics are yet available, it would appear from the impression gained that the change has been justified.

The principal numbers and rates relating to vital statistics are given in the following table :—

VICTORIA—SUMMARY OF VITAL STATISTICS, 1961

Division	Number of—				Rate per 1,000 of Mean Population			Infant Mortality	
	Marriages	Live Births	Deaths	Deaths under One Year†	Marriages	Live Births	Deaths	Deaths under One Year per 1,000 Live Births	
Melbourne Metropolitan Area ..	*	41,198	16,200	719	*	21.39	8.49	17.43	
Other Urban Areas—									
Geelong ..	*	2,084	740	42	*	22.98	8.38	21.34	
Ballarat ..	*	1,180	509	21	*	21.72	9.62	18.46	
Bendigo ..	*	889	382	20	*	22.25	9.82	23.41	
Rest of State ..	*	20,535	6,669	371	*	24.84	8.07	18.07	
Victoria ..		21,264	65,886	24,500	1,173	7.26	22.51	8.37	17.80

\* Not available. † Included in figure for deaths.

Marriages

Marriages in Victoria in 1961 numbered 21,264, an increase of 637 as compared with the number registered in 1960. The rate per 1,000 of mean population in 1961 was 7.26 as compared with a rate of 7.22 in 1960. The highest rate ever recorded in Victoria was 12.06 in 1942, and the lowest 5.66 in 1931.

The following tables show the number of marriages and the marriage rate per 1,000 of the mean population in the Australian States and Territories for each of the five years 1957 to 1961:—

AUSTRALIA—NUMBER OF MARRIAGES

Year	New South Wales	Victoria	Queensland	South Australia	Western Australia	Tasmania	Northern Territory	Australian Capital Territory	Australia
1957..	28,767	20,239	10,271	6,581	4,897	2,507	178	256	73,696
1958..	28,554	20,649	10,255	6,505	5,038	2,475	201	324	74,001
1959..	28,201	20,456	10,581	6,614	5,387	2,567	205	352	74,363
1960..	29,328	20,627	10,227	6,607	5,323	2,713	208	395	75,428
1961..	29,773	21,264	10,392	6,804	5,150	2,677	207	419	76,686

AUSTRALIA—MARRIAGE RATES

Year	New South Wales	Victoria	Queensland	South Australia	Western Australia	Tasmania	Northern Territory	Australian Capital Territory	Australia
1957..	7.94	7.62	7.29	7.53	7.12	7.63	8.63	6.74	7.65
1958..	7.73	7.60	7.14	7.25	7.20	7.38	9.24	7.88	7.52
1959..	7.50	7.34	7.23	7.18	7.57	7.52	8.68	7.55	7.40
1960..	7.65	7.22	6.86	6.99	7.36	7.82	8.28	7.51	7.34
1961..	7.60	7.26	6.86	7.02	6.98	7.57	7.83	7.13	7.30

The relative ages of bridegrooms and brides who married in Victoria in 1961 are shown in the following table :—

VICTORIA—RELATIVE AGES OF BRIDEGROOMS AND BRIDES, 1961

Ages of Bridegrooms (Years)	Ages of Brides (Years)														Total Bridegrooms	
	13	14	15	16	17	18	19	20	21 to 24	25 to 29	30 to 34	35 to 39	40 to 44	45 to 49		50 and over
16 ..	..	..	2	5	4	1	1	1	..	..	..	..	..	..	..	14
17 ..	..	2	14	24	28	9	4	4	3	..	..	..	..	..	..	88
18 ..	..	2	17	41	75	71	30	14	10	..	..	..	..	..	..	260
19 ..	..	3	12	85	128	156	116	51	54	9	3	..	..	..	..	617
20 ..	..	..	15	62	145	193	208	161	182	10	..	..	..	..	..	976
21 to 24 ..	1	2	21	137	419	743	1,264	1,484	3,858	353	34	12	2	..	..	8,330
25 to 29 ..	1	2	5	23	97	237	495	664	2,848	1,051	213	49	3	3	..	5,691
30 to 34 ..	..	..	1	4	22	40	83	121	742	744	408	143	39	17	2	2,366
35 to 39 ..	..	..	..	1	2	4	5	18	152	266	242	217	60	32	16	1,015
40 to 44 ..	..	..	..	..	1	2	3	4	31	76	101	116	107	43	21	505
45 to 49 ..	..	..	..	..	..	..	2	2	9	22	50	98	90	109	44	426
50 to 54 ..	..	..	..	..	..	..	..	..	1	5	25	34	62	74	91	292
55 to 59 ..	..	..	..	..	..	..	..	..	3	2	12	13	25	35	116	206
60 to 64 ..	..	..	..	1	..	..	..	..	..	..	6	5	8	22	133	175
65 and over ..	..	..	..	..	..	..	..	..	1	..	1	2	8	10	281	303
Total Brides	2	11	87	383	921	1,456	2,211	2,524	7,894	2,538	1,095	689	404	345	704	21,264

Of every 1,000 men who married during 1961, 783 were older and 129 were younger than their brides, and 88 were of the same age. In 1961 the oldest bridegroom was aged 91 years and the oldest bride 88 years ; the youngest bridegrooms were aged sixteen years, and the youngest brides thirteen years.

The percentages in age groups of bridegrooms and brides who married in 1961 are shown in the following table :—

VICTORIA—PERCENTAGES OF BRIDEGROOMS AND BRIDES IN AGE GROUPS, 1961

Age Group (Years)	Percentage of Total—		Age Group (Years)	Percentage of Total—	
	Bridegrooms	Brides		Bridegrooms	Brides
Under 16 ..	..	0·5	35 to 39 ..	4·8	3·2
16 ..	0·1	1·8	40 to 44 ..	2·4	1·9
17 ..	0·4	4·3	45 to 49 ..	2·0	1·6
18 ..	1·2	6·9	50 to 54 ..	1·4	1·2
19 ..	2·9	10·4	55 to 59 ..	1·0	0·8
20 ..	4·6	11·9	60 and over ..	2·2	1·3
21 to 24 ..	39·2	37·1			
25 to 29 ..	26·7	11·9		100·0	100·0
30 to 34 ..	11·1	5·2			

The number of minors marrying at each age and the proportion of each sex to the total marriages are given in the following table for each of the five years 1957 to 1961:—

## VICTORIA—MARRIAGES OF MINORS

Year	Age in Years								Total		
	13	14	15	16	17	18	19	20	Number	Percentage of Total Marriages	
<b>BRIDEGROOMS</b>											
1957	..	..	..	..	9	41	184	434	855	1,523	7·53
1958	..	..	..	1	11	58	213	465	851	1,599	7·74
1959	..	..	..	..	12	55	218	494	869	1,648	8·06
1960	..	..	..	2	13	61	288	559	905	1,828	8·86
1961	..	..	..	..	14	88	260	617	976	1,955	9·19
<b>BRIDES</b>											
1957	..	2	8	64	287	684	1,373	2,010	2,392	6,820	33·70
1958	..	1	9	89	321	731	1,417	2,036	2,512	7,116	34·46
1959	..	..	19	77	327	742	1,377	2,060	2,458	7,060	34·51
1960	..	..	5	78	381	771	1,487	2,175	2,490	7,387	35·81
1961	..	2	11	87	383	921	1,456	2,211	2,524	7,595	35·72

A feature of Victorian marriages since the end of the Second World War has been the increase in the proportion of marriages which involve minors. In 1947, 4·82 per cent. of bridegrooms and 22·94 per cent. of brides were under 21 years of age. In 1961 these percentages were 9·19 and 35·72 respectively, and in 7·92 per cent. of marriages both parties were under 21 years of age.

The mean ages at marriage, according to conjugal condition, are shown in the following table for each of the five years, 1957 to 1961:—

## VICTORIA—MEAN AGE AT MARRIAGE

Year	Bridegrooms				Brides				
	Bachelors	Widowers	Divorced	All Bridegrooms	Spinsters	Widows	Divorced	All Brides	
1957	..	26·7	56·3	41·3	28·7	23·5	48·9	37·0	25·3
1958	..	26·7	56·9	41·0	28·6	23·4	48·7	36·9	25·2
1959	..	26·6	56·3	40·4	28·6	23·2	48·9	37·1	25·2
1960	..	26·3	56·8	41·1	28·3	23·1	49·2	37·1	25·0
1961	..	26·2	57·0	41·4	28·2	23·0	49·5	37·9	24·9

In general terms, the age in relation to which approximately half the number of bachelors was younger, and approximately half was older (the median age), was 25 years. The corresponding age for spinsters was 21 years. More bachelors were married at 22 years and spinsters at 21 years (the modal ages) than at any other age.

In the following tables are given the number of persons in each conjugal condition marrying during each of the five years 1957 to 1961, and the proportions in each condition for periods since 1930 :—

### VICTORIA—CONJUGAL CONDITION OF PERSONS MARRYING

Period	Bridegrooms			Brides			Total Marriages
	Bachelors	Widowers	Divorced	Spinsters	Widows	Divorced	
1957 ..	18,405	859	975	18,264	848	1,127	20,239
1958 ..	18,740	808	1,101	18,610	834	1,205	20,649
1959 ..	18,406	841	1,209	18,287	833	1,336	20,456
1960 ..	18,742	830	1,055	18,541	858	1,228	20,627
1961 ..	19,407	836	1,021	19,279	868	1,117	21,264

### VICTORIA—TOTAL MARRIAGES IN 1961 AND PERCENTAGE OF PERSONS MARRYING IN EACH CONJUGAL CONDITION, 1930 TO 1961

Marriages Between—	1961		Conjugal Condition	Percentage of Total—			
	Number	Percentage		1930-39	1940-49	1950-59	1961
<b>BRIDEGROOMS</b>							
Bachelors and Spinsters ..	18,445	86.7	Bachelors	92.3	90.5	89.5	91.3
Bachelors and Widows ..	329	1.6	Widowers	5.5	4.9	4.5	3.9
Bachelors and Divorced Women .. ..	633	3.0	Divorced	2.2	4.6	6.0	4.8
Widowers and Spinsters ..	288	1.4	Total ..	100.0	100.0	100.0	100.0
Widowers and Widows ..	392	1.8					
Widowers and Divorced Women .. ..	156	0.7	<b>BRIDES</b>				
Divorced Men and Spinsters .. ..	546	2.6	Spinsters	94.4	91.4	89.2	90.7
Divorced Men and Widows	147	0.7	Widows	3.4	3.9	4.4	4.1
Divorced Men and Divorced Women .. ..	328	1.5	Divorced	2.2	4.7	6.4	5.2
Total Marriages .. ..	21,264	100.0	Total ..	100.0	100.0	100.0	100.0

In 1961, the number of marriages celebrated by ministers of religion was 19,334 representing 91 per cent. of the total marriages. Civil marriages numbered 1,930, or 9 per cent. of the total.

The number and proportion of civil marriages and of marriages solemnized according to the rites of the principal religious denominations for the years 1941, 1951, and 1961 are shown in the following table :—

### VICTORIA—MARRIAGES, RELIGIOUS AND CIVIL

Denomination	1941		1951		1961	
	Number	Per-centage of Total Marriages	Number	Per-centage of Total Marriages	Number	Per-centage of Total Marriages
Church of England ..	6,578	31·48	6,072	28·76	4,857	22·84
Roman Catholic ..	4,144	19·83	4,376	20·72	6,037	28·39
Presbyterian ..	3,623	17·34	4,119	19·51	3,217	15·13
Methodist ..	2,940	14·07	2,995	14·18	2,584	12·15
Baptist ..	762	3·65	376	1·78	336	1·58
Churches of Christ ..	470	2·25	358	1·70	375	1·76
Congregational ..	307	1·47	345	1·63	249	1·17
Lutheran ..	69	0·33	209	0·99	269	1·27
Hebrew ..	117	0·56	232	1·10	166	0·78
Salvation Army ..	184	0·88	95	0·45	113	0·53
Other Denominations ..	225	1·07	286	1·35	1,131	5·32
Civil Marriages ..	1,478	7·07	1,654	7·83	1,930	9·08
Total ..	20,897	100·00	21,117	100·00	21,264	100·00

The following table shows the number of civil marriages and proportion to total marriages performed for each of the five years 1957 to 1961. The number of civil marriages performed in the Office of the Government Statist and the proportion of these to total civil marriages are also shown.

### VICTORIA—CIVIL MARRIAGES

Year	Total Civil Marriages		Performed in the Office of the Government Statist	
	Number	Percentage of Total Marriages	Number	Percentage of Total Civil Marriages
1957 .. ..	1,663	8·22	1,535	92·30
1958 .. ..	1,776	8·60	1,620	91·22
1959 .. ..	1,863	9·11	1,687	90·55
1960 .. ..	1,932	9·37	1,764	91·30
1961 .. ..	1,930	9·08	1,720	89·12

### Divorce

Until the proclamation by the Commonwealth of the *Matrimonial Causes Act* 1960, which was proclaimed to operate from 1st February, 1961, the law in Victoria in regard to divorce was contained in the *Marriage Act* 1958.

The following table gives the number of petitions filed by husbands and wives respectively, and the number of dissolutions of marriage and nullities of marriage during the year 1961. There were no petitions filed nor decrees granted for judicial separation during that year. Every decree of dissolution of marriage is in the first instance a decree *nisi* and is not made absolute till the expiration of not less than three months thereafter.

#### VICTORIA—DIVORCES, 1961

Petition for—	Petitions Filed by—			Decrees Granted to—		
	Husbands	Wives	Total	Husbands	Wives	Total
Dissolution of Marriage	1,110*	1,186*	2,296*	594	654	1,248
Nullity of Marriage ..	2	8	10	5	4	9
Total .. ..	1,112	1,194	2,306	599	658	1,257

\* Includes three husbands' and four wives' petitions for dissolution or nullity.

The following table shows the number of petitions filed and decrees granted for dissolution, nullity, and judicial separation for each of the five years 1957 to 1961:—

#### VICTORIA—DIVORCE: PETITIONS FILED AND DECREES GRANTED: DISSOLUTION, NULLITY, AND JUDICIAL SEPARATION

Year	Petitions Filed			Decrees Granted		
	Dissolution	Nullity	Judicial Separation	Dissolution	Nullity	Judicial Separation
1957 ..	1,654	21	5	1,345	15	2
1958 ..	1,579	15	..	1,698	19	..
1959 ..	1,650	12	4	1,861	16	..
1960 ..	1,798	17	2	1,296	16	1
1961 ..	2,296*	10	..	1,248	9	..

\* Includes seven petitions for dual relief—dissolution or nullity.



The grounds upon which divorces were granted during the year 1961 are set out in the following table :—

VICTORIA—GROUNDS FOR DIVORCE, 1961

Grounds on Which Granted	Dissolution of Marriage		Nullity of Marriage	
	Husbands' Petitions	Wives' Petitions	Husbands' Petitions	Wives' Petitions
Adultery .. .. .	181	125	..	..
Adultery and Desertion .. .. .	31	24	..	..
Cruelty .. .. .	..	8	..	..
Desertion .. .. .	362	454	..	..
Separation .. .. .	11	23	..	..
Desertion and Separation .. .. .	4	4	..	..
Other Grounds .. .. .	5	16	5	4
Total .. .. .	594	654	5	4

The following table shows the number of petitioners to whom decrees were granted in 1961, the ages of such petitioners at date of decree, and the number of their issue :—

VICTORIA—DIVORCE PETITIONS GRANTED : AGES OF PETITIONERS (AT DATE OF DECREE) AND ISSUE, 1961

Ages of Petitioners (Years)	Dissolution of Marriage		Nullity of Marriage		Number of Children	
	Husbands' Petitions	Wives' Petitions	Husbands' Petitions	Wives' Petitions	Husbands' Petitions	Wives' Petitions
Under 21 .. .. .	1	1	1	..	..	1
21-24 .. .. .	16	34	1	..	14	24
25-29 .. .. .	62	119	..	..	56	120
30-34 .. .. .	123	129	1	2	139	143
35-39 .. .. .	124	117	1	..	129	140
40-44 .. .. .	75	118	..	1	102	164
45-49 .. .. .	68	56	1	..	86	90
50-54 .. .. .	69	38	..	..	89	52
55-59 .. .. .	24	21	..	..	23	30
60 and over .. .. .	32	21	..	1	31	44
Total .. .. .	594	654	5	4	669	808

In the following table particulars are given of the duration of marriage and issue in respect of the petitions granted for dissolution of marriage during 1961 :—

VICTORIA—DISSOLUTIONS OF MARRIAGE : PETITIONS GRANTED : DURATION OF MARRIAGE AND ISSUE, 1961

Duration of Marriage (Years)	Number of Children									Total Dissolutions of Marriage	Total Children
	0	1	2	3	4	5	6	7	8 and over		
1 .. .. .	3	..	..	..	..	..	..	..	..	3	..
2 .. .. .	5	..	..	..	..	..	..	..	..	5	..
3 .. .. .	8	6	1	..	..	..	..	..	..	15	8
4 .. .. .	29	3	1	..	1	..	..	..	..	34	9
5 .. .. .	45	19	8	..	..	..	..	..	..	73	42
6 .. .. .	49	22	9	..	..	..	..	1	..	80	40
7 .. .. .	44	25	6	2	..	..	..	..	..	77	43
8 .. .. .	33	20	17	6	..	..	..	..	..	76	72
9 .. .. .	19	25	22	2	1	..	..	..	..	69	79
10 .. .. .	25	19	24	8	..	..	..	..	..	76	91
11 .. .. .	30	21	13	7	2	..	..	..	..	73	76
12 .. .. .	25	24	11	5	2	2	..	..	..	69	79
13 .. .. .	24	17	10	10	..	1	..	..	..	62	72
14 .. .. .	14	14	11	9	2	1	..	..	..	51	76
15-19 .. .. .	50	55	40	27	7	1	1	..	1	182	263
20-24 .. .. .	39	36	49	22	6	2	..	..	..	154	234
25-29 .. .. .	10	18	26	12	7	1	1	..	..	75	145
30-34 .. .. .	7	2	12	9	1	..	..	..	1	32	66
35-39 .. .. .	4	6	4	5	..	2	1	..	..	22	45
40 and over .. .. .	9	1	3	2	3	1	1	..	..	20	36
Total Dissolutions of Marriage .. .. .	472	333	267	126	32	11	4	1	2	1,248	..
Total Children .. .. .	..	333	534	378	128	55	24	7	17	..	1,476

The following table shows the ages of the parties concerned in the decrees for dissolution of marriage, petitions for which had been granted during 1961 :—

VICTORIA—DISSOLUTIONS OF MARRIAGE : PETITIONS GRANTED : AGES OF PARTIES AT DATE OF DECREE, 1961

Ages of Husbands (Years)	Ages of Wives (Years)										Total Husbands
	Under 21	21-24	25-29	30-34	35-39	40-44	45-49	50-54	55-59	60 and over	
Under 21 .. .. .	1	..	..	..	..	..	..	..	..	..	1
21-24 .. .. .	2	19	4	..	..	..	..	..	..	..	25
25-29 .. .. .	2	42	84	12	2	..	..	..	..	..	142
30-34 .. .. .	1	13	98	108	23	2	..	1	..	..	246
35-39 .. .. .	..	2	26	106	98	21	5	1	..	..	259
40-44 .. .. .	..	..	6	31	58	70	12	3	..	..	180
45-49 .. .. .	..	..	1	8	23	60	51	9	2	2	156
50-54 .. .. .	..	..	1	2	6	24	43	37	12	1	126
55-59 .. .. .	..	..	..	2	3	3	12	15	13	3	51
60 and over .. .. .	..	..	..	1	..	2	4	4	13	38	62
Total Wives .. .. .	6	76	220	270	213	182	127	70	40	44	1,248

The following is a table of the number of decrees granted in Victoria for dissolution of marriage and for judicial separation since 1911 :—

VICTORIA—DISSOLUTIONS OF MARRIAGE AND JUDICIAL SEPARATIONS

Period	Decrees Granted For—		Year	Decrees Granted For—	
	Dissolution of Marriage	Judicial Separation		Dissolution of Marriage	Judicial Separation
1911-20 ..	2,499	14	1957	1,345	2
1921-30 ..	4,403	16	1958	1,698	..
1931-40 ..	6,495	16	1959	1,861	..
1941-50 ..	15,460	22	1960	1,296	1
1951-60 ..	16,054	11	1961	1,248	..

### Births

#### General

The number of births registered in Victoria during the year 1961 was 65,886, the highest ever registered in Victoria.

In young communities, birth-rates calculated per 1,000 of the mean population are to some extent misleading. In the earlier periods when, owing to immigration, the population consists for the most part of men and women at the reproductive period of life, such rates are naturally high. As time proceeds, notwithstanding that immigration of reproductive adults may be maintained, the proportion of such adults to the total population must diminish, and, with it, consequently the birth-rate.

Stillbirths, which are excluded from both births and deaths, numbered 885 and corresponded to a ratio of 13·25 per 1,000 infants born alive in 1961. The compulsory registration of still-born children became effective in 1953.

The following tables show the number of births, and rates per 1,000 of mean population in each State and Territory from 1957 to 1961 :—

### AUSTRALIA—NUMBER OF BIRTHS

Year	New South Wales	Victoria	Queensland	South Australia	Western Australia	Tasmania	Northern Territory	Australian Capital Territory	Australia
1957.. ..	79,456	60,464	33,763	19,536	16,924	8,435	646	1,134	220,358
1958.. ..	80,045	61,269	33,872	20,047	16,731	8,568	697	1,275	222,504
1959.. ..	80,866	62,245	35,599	20,372	17,111	8,625	796	1,362	226,976
1960.. ..	81,983	64,025	35,213	20,966	16,926	8,853	777	1,583	230,326
1961.. ..	86,392	65,886	36,637	22,399	17,078	8,982	878	1,734	239,986

### AUSTRALIA—BIRTH-RATES

Year	New South Wales	Victoria	Queensland	South Australia	Western Australia	Tasmania	Northern Territory	Australian Capital Territory	Australia
1957.. ..	21·92	22·76	23·97	22·35	24·62	25·68	31·33	29·84	22·86
1958.. ..	21·66	22·55	23·59	22·35	23·90	25·55	32·05	31·01	22·60
1959.. ..	21·49	22·36	24·31	22·12	24·04	25·26	33·70	29·22	22·57
1960.. ..	21·38	22·41	23·62	22·19	23·41	25·52	30·95	30·12	22·42
1961.. ..	22·06	22·51	24·18	23·11	23·16	25·40	33·22	29·49	22·85

The following table shows the number of births by sex, the ratio of male to female births and the average ages of parents in each year from 1957 to 1961 :—

### VICTORIA—BIRTHS BY SEX, MASCULINITY, AVERAGE AGE OF FATHER AND MOTHER

Year	Males	Females	Total	Masculinity*	Average Age†	
					Father	Mother
1957 ..	30,968	29,496	60,464	105·00	31·5	28·1
1958 ..	31,517	29,752	61,269	105·93	31·5	28·1
1959 ..	32,041	30,204	62,245	106·08	30·8	27·9
1960 ..	32,825	31,200	64,025	105·21	31·3	28·0
1961 ..	33,875	32,011	65,886	105·82	31·3	27·9

\* Number of male births per 100 female births.

† Average age of father and mother of nuptial children only.

The following table, relating to nuptial confinements, shows the number of previous issue to mothers in the various age groups :—

VICTORIA—NUPTIAL CONFINEMENTS : AGE GROUP OF MOTHER AND PREVIOUS ISSUE\*, 1961

Age Group of Mother (Years)	Number of Married Mothers with Previous Issue Numbering—											Total Married Mothers
	0	1	2	3	4	5	6	7	8	9	10 and over	
Under 15 ..	2	..	..	..	..	..	..	..	..	..	..	2
15-19 .. ..	2,819	651	71	3	1	..	..	..	..	..	..	3,545
20-24 .. ..	9,685	6,366	2,299	669	133	28	6	1	..	..	..	19,187
25-29 .. ..	4,543	6,117	4,624	2,251	874	337	107	24	10	3	..	18,890
30-34 .. ..	1,691	2,734	3,313	2,513	1,284	609	329	125	60	20	11	12,689
35-39 .. ..	652	1,015	1,296	1,281	903	546	310	166	103	43	47	6,362
40-44 .. ..	151	174	255	303	266	180	126	83	57	35	60	1,690
45-49 .. ..	15	14	23	17	18	11	12	13	1	3	10	137
Aged 50 ..	..	2	..	..	..	..	..	..	..	..	..	2
Total ..	19,558	17,073	11,881	7,037	3,479	1,711	890	412	231	104	128	62,504
Proportion of Total Married Mothers	31·29	27·31	19·01	11·26	5·57	2·74	1·42	0·66	0·37	0·17	0·20	100·00

\* Including ex-nuptial children by the same father. Children of former marriage and all stillborn children are excluded.

The average total issue of married mothers in respect of whom births were registered in 1961 is shown in the following table :—

VICTORIA—NUPTIAL CONFINEMENTS : NUMBER OF MOTHERS IN AGE GROUPS, TOTAL ISSUE AND AVERAGE ISSUE, 1961

Age Group of Mother (Years)	Number of Mothers	Total Issue*	Average Issue
Under 20 .. ..	..	..	..
20-24 .. ..	..	..	..
25-29 .. ..	..	..	..
30-34 .. ..	..	..	..
35-39 .. ..	..	..	..
40-44 .. ..	..	..	..
45-49 .. ..	..	..	..
Aged 50 .. ..	..	..	..
Total .. ..	..	..	..
	62,504	159,991	2·56

\* Includes issue to present confinement and all previous issue to existing union.

The following table shows nuptial confinements according to the relative age groups of parents :—

VICTORIA—NUPTIAL CONFINEMENTS : RELATIVE AGE GROUPS OF PARENTS, 1961

Age Group of Father (Years)	Age Group of Mother (Years)								Total Fathers
	Under 20	20-24	25-29	30-34	35-39	40-44	45-49	Aged 50	
Under 20 ..	501	91	2	..	..	..	..	..	594
20-24 ..	2,252	6,589	640	38	1	..	..	..	9,520
25-29 ..	652	9,222	8,263	965	89	6	..	..	19,197
30-34 ..	122	2,728	7,736	5,975	785	64	..	..	17,410
35-39 ..	15	462	1,842	4,287	2,944	274	3	..	9,827
40-44 ..	2	60	306	1,097	1,762	717	13	..	3,957
45-49 ..	1	27	68	250	592	459	66	1	1,464
50 and over ..	2	8	33	77	189	170	55	1	535
Married Mothers	3,547	19,187	18,890	12,689	6,362	1,690	137	2	62,504

Nuptial first births according to age group of mother and duration of marriage are shown in the following table for the year 1961 :—

VICTORIA—NUPTIAL FIRST BIRTHS : AGE GROUP OF MOTHER AND DURATION OF MARRIAGE, 1961

Age of Mother (Years)	Duration of Marriage																Total Nuptial First Births	
	Months											Years						
	0	1	2	3	4	5	6	7	8	9	10	11	1	2	3	4		5 and over
Under 15 ..	..	..	..	1	..	1	..	..	..	..	..	..	..	..	..	..	..	2
15-19 ..	19	41	70	130	237	430	579	322	110	166	113	110	440	47	5	..	..	2,819
20-24 ..	23	25	49	106	182	328	495	318	388	962	746	636	3,306	1,272	537	203	108	9,684
25-29 ..	9	12	7	20	24	50	74	75	106	289	240	199	1,122	707	546	418	645	4,543
30-34 ..	4	4	6	6	12	23	27	31	40	93	95	54	367	178	144	101	507	1,692
35-39 ..	1	1	4	4	4	7	14	9	21	27	32	21	129	84	58	36	200	652
40-44 ..	..	..	1	..	..	5	3	3	3	7	3	1	25	21	18	6	55	151
45-49 ..	..	..	..	..	..	1	..	..	..	..	..	1	2	2	..	2	7	15
Total	56	83	137	267	459	845	1,192	758	668	1,544	1,229	1,022	5,391	2,311	1,308	766	1,522	19,558

The number of cases of multiple births and the proportions per 1,000 of the total cases of births in each of the five years 1957 to 1961 were as follows:—

VICTORIA—MULTIPLE BIRTHS

Year	Cases of Twins	Cases of Triplets and Quadruplets	Total Multiple Cases	Multiple Cases per 1,000 of Total Confinements
1957 .. ..	695	10	705	11·80
1958 .. ..	759	9	768	12·69
1959 .. ..	711	7	718	11·67
1960 .. ..	734	4	738	11·66
1961 .. ..	713	8*	721	11·06

\* Includes one case of quadruplets.

The last preceding case of quadruplets occurred in 1951.

On the average of the five years 1957 to 1961, the proportion of mothers of twins was one in 86, of mothers of triplets, one in 8,386, and of mothers of all multiple births, one in 85 mothers.

The following tables show the number of ex-nuptial births and the percentage of ex-nuptial births to total births in each State and Territory in Australia in the years 1957 to 1961:—

AUSTRALIA—EX-NUPTIAL BIRTHS

Year	New South Wales	Victoria	Queensland	South Australia	Western Australia	Tasmania	Northern Territory	Australian Capital Territory	Australia
1957.. ..	3,438	2,065	1,954	651	799	346	87	22	9,362
1958.. ..	3,832	2,219	1,993	738	854	375	99	21	10,131
1959.. ..	4,017	2,308	2,161	745	904	388	133	31	10,687
1960.. ..	4,114	2,380	2,173	841	921	433	100	25	10,987
1961.. ..	4,575	2,706	2,445	1,026	959	404	120	34	12,269

AUSTRALIA—EX-NUPTIAL BIRTHS : PERCENTAGE OF TOTAL BIRTHS

Year	New South Wales	Victoria	Queensland	South Australia	Western Australia	Tasmania	Northern Territory	Australian Capital Territory	Australia
1957.. ..	4·33	3·42	5·79	3·33	4·72	4·10	13·47	1·94	4·25
1958.. ..	4·79	3·62	5·88	3·68	5·10	4·38	14·20	1·65	4·55
1959.. ..	4·97	3·71	6·07	3·66	5·28	4·50	16·71	2·28	4·71
1960.. ..	5·02	3·72	6·17	4·01	5·44	4·89	12·87	1·58	4·77
1961.. ..	5·30	4·11	6·67	4·58	5·62	4·50	13·67	1·96	5·11

The ages of mothers of ex-nuptial children in Victoria are shown in the following table for the years 1957 to 1961:—

VICTORIA—AGES OF MOTHERS OF EX-NUPTIAL CHILDREN

Age of Mother (Years)	1957	1958	1959	1960	1961
12 .. .. .	..	..	..	2	..
13 .. .. .	2	4	3	2	1
14 .. .. .	3	10	4	9	18
15 .. .. .	18	38	43	37	41
16 .. .. .	61	73	96	87	131
17 .. .. .	87	117	142	167	180
18 .. .. .	118	135	157	200	238
19 .. .. .	159	173	175	222	209
20 .. .. .	160	149	176	165	221
21-24 .. ..	438	485	478	487	539
25-29 .. ..	457	435	388	385	403
30-34 .. ..	307	317	353	346	378
35-39 .. ..	173	194	201	177	229
40-44 .. ..	52	56	61	73	76
45 and over ..	4	4	9	3	5
Total .. ..	2,039	2,190	2,286	2,362	2,669

*Adoption of Children*

Provision for the legal adoption of children and the registration of each adoption is contained in the *Adoption of Children Act* 1958. Details of the history of this legislation are contained on page 483 of the Victorian Year Book 1954-58.

The following table shows the number of legal adoptions (male and female) from 1957:—

VICTORIA—CHILDREN LEGALLY ADOPTED

Period	Number of Children Adopted	
	Males	Females
1957 .. .. .	612	612
1958 .. .. .	633	665
1959 .. .. .	576	656
1960 .. .. .	633	649
1961 .. .. .	772	806



*Children Legitimated*

Provision for the legitimation of children is contained in the *Registration of Births, Deaths, and Marriages Act 1958*.

The table below shows the number of legitimations and the proportion per 100 ex-nuptial births from 1957 :—

## VICTORIA—LEGITIMATIONS

Period				Number of Legitimations	Proportion per 100 Ex-nuptial Births
1957	..	..	..	124	6.0
1958	..	..	..	87	3.9
1959	..	..	..	86	3.7
1960	..	..	..	107	4.5
1961	..	..	..	100	3.7

Legitimation Acts are in force in all the Australian States, but differ greatly in content, and as a consequence there are marked differences in the numbers of legitimations resulting from them. In proportion to every 100 children born out of wedlock in 1961, the numbers of legitimations in the several States during that year were as follows :—Victoria, 3.7 ; New South Wales, 6.3 ; Queensland, 11.3 ; South Australia, 7.4 ; Western Australia, 20.2 ; and Tasmania, 15.6.

**Deaths**

The following tables show the number of deaths and the death-rates per 1,000 of the mean population in each of the Australian States and Territories for each of the five years 1957 to 1961 :—

## AUSTRALIA—NUMBER OF DEATHS

Year	New South Wales	Victoria	Queensland	South Australia	Western Australia	Tasmania	Northern Territory	Australian Capital Territory	Australia
1957	33,317	24,131	11,679	7,576	5,297	2,670	115	168	84,953
1958	32,350	23,625	11,455	7,743	5,554	2,708	106	182	83,723
1959	35,249	25,078	12,349	7,943	5,497	2,780	124	192	89,212
1960	35,030	24,547	12,370	7,804	5,697	2,670	134	212	88,464
1961	35,048	24,500	12,756	7,815	5,729	2,789	128	196	88,961

## AUSTRALIA—DEATH-RATES

Year	New South Wales	Victoria	Queensland	South Australia	Western Australia	Tasmania	Northern Territory	Australian Capital Territory	Australia
1957	9.19	9.08	8.29	8.67	7.71	8.13	5.58	4.40	8.81
1958	8.75	8.69	7.98	8.63	7.94	8.07	4.87	4.43	8.50
1959	9.37	9.01	8.43	8.62	7.72	8.14	5.25	4.12	8.87
1960	9.14	8.59	8.30	8.26	7.88	7.70	5.34	4.03	8.61
1961	8.95	8.37	8.42	8.06	7.77	7.89	4.84	3.33	8.47

VICTORIA—PERCENTAGE OF TOTAL DEATHS IN EACH AGE GROUP BY SEX, 1921 TO 1961

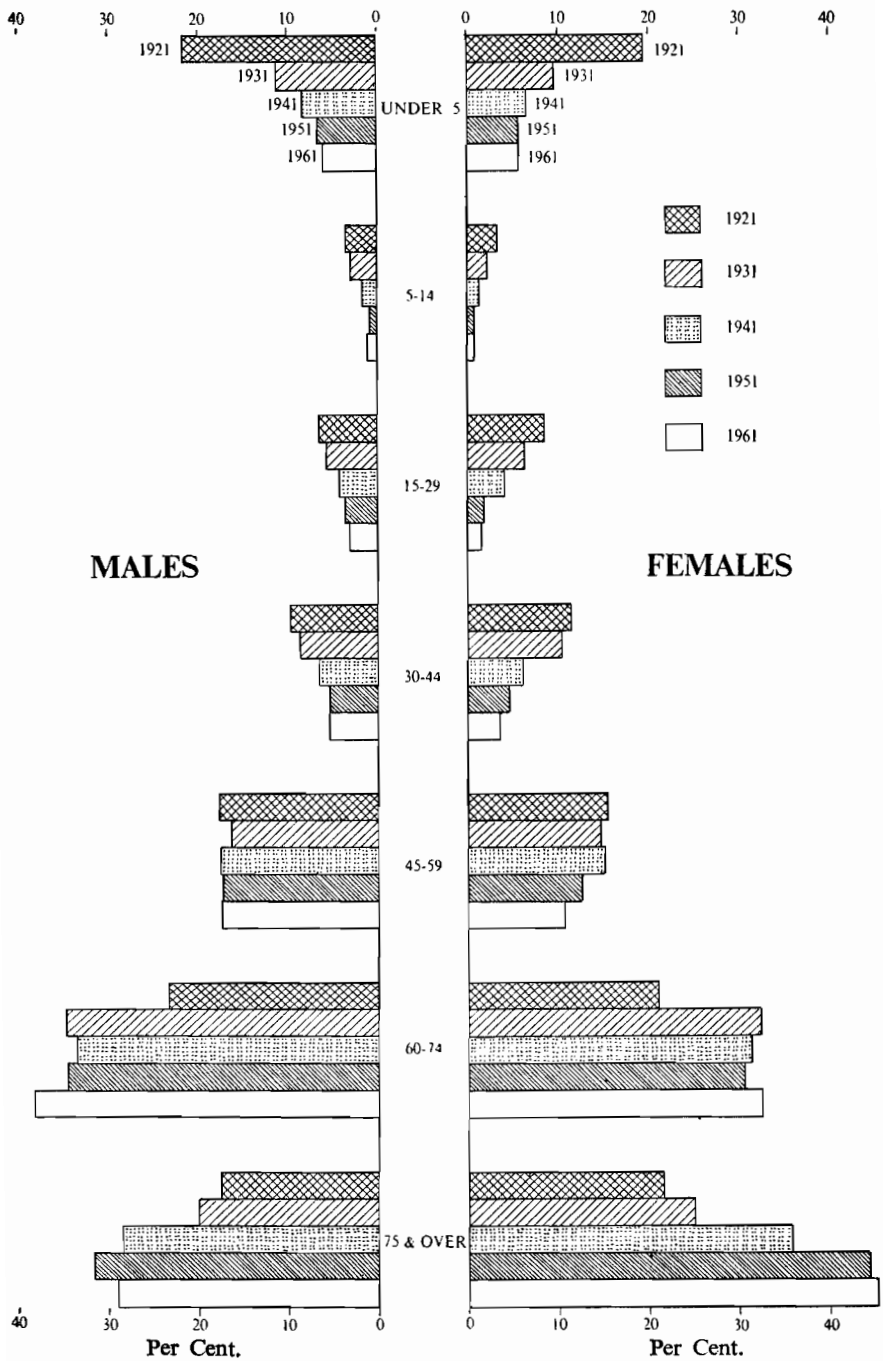


FIGURE 8.

The ages of males and of females who died in each of the years 1947, 1954, and 1961 are shown in the following table :—

## VICTORIA—AGES AT DEATH

Ages	1947			1954			1961		
	Males	Females	Total	Males	Females	Total	Males	Females	Total
Under 1 year .. ..	725	520	1,245	622	433	1,055	656	517	1,173
1 year .. ..	54	38	92	79	50	129	56	35	91
2 years .. ..	35	18	53	49	25	74	36	29	65
3 " .. ..	29	15	44	33	20	53	36	23	59
4 " .. ..	25	13	38	25	21	46	28	25	53
5-9 years .. ..	91	39	130	75	58	133	66	53	119
10-14 " .. ..	47	34	81	46	32	78	77	34	111
15-19 " .. ..	104	60	164	106	35	141	130	63	193
20-24 " .. ..	141	105	246	135	38	173	165	58	223
25-29 " .. ..	131	111	242	162	80	242	125	58	183
30-34 " .. ..	142	139	281	158	98	256	171	72	243
35-39 " .. ..	183	154	337	182	133	315	223	140	363
40-44 " .. ..	296	206	502	280	209	489	324	167	491
45-49 " .. ..	398	320	718	443	257	700	498	275	773
50-54 " .. ..	678	490	1,168	660	417	1,077	778	388	1,166
55-59 " .. ..	928	646	1,574	913	530	1,443	1,077	494	1,571
60-64 " .. ..	1,147	821	1,968	1,274	851	2,125	1,451	808	2,259
65-69 " .. ..	1,299	1,021	2,320	1,551	1,152	2,703	1,771	1,204	2,975
70-74 " .. ..	1,334	1,244	2,578	1,622	1,364	2,986	1,938	1,563	3,501
75-79 " .. ..	1,491	1,535	3,026	1,567	1,542	3,109	1,654	1,608	3,262
80-84 " .. ..	1,126	1,419	2,545	1,139	1,467	2,606	1,268	1,578	2,846
85-89 " .. ..	661	894	1,555	753	1,029	1,782	728	1,125	1,853
90-94 " .. ..	166	288	454	244	469	713	236	495	731
95-99 " .. ..	23	46	69	38	78	116	38	137	175
100 years and over .. ..	2	4	6	3	2	5	3	15	18
Unknown .. ..	5	1	6	3	2	5	1	2	3
Total .. ..	11,261	10,181	21,442	12,162	10,392	22,554	13,534	10,966	24,500

The diagram on page 152 shows the percentages of deaths occurring in certain age groups in calendar years at ten-year intervals between 1921 and 1961, and supplies a graphic representation of the patterns of ages of males and females whose deaths were recorded in those years.

The changing pattern shown by the diagram is the result of a number of demographic features, and although detailed effects of individual features are not readily apparent, the diagram portrays visually the general improvement in survival from earlier ages.

In 1961 there were 1,234 male to every 1,000 female deaths, the average for the preceding five years being 1,188.

## Causes of Death

## Classification

The Sixth (1948) Revision of the International List of Causes of Death was adopted for use in classifying causes of death in 1950.

The Revision introduced international rules for a uniform method of selecting the underlying cause of death to be tabulated if more than one cause is stated on the death certificate.

The comparability of statistics for years subsequent to 1950 with those for years prior to 1950 has been affected by the adoption of the new method.

The Seventh (1955) Revision of the International List of Causes of Death was adopted for use in 1958.

The causes of death in Victoria for 1961, according to the abbreviated list of the Seventh (1955) Revision of the International List of Causes of Death, the proportion of total deaths from each cause, and the rate per million of mean population are shown in the following table :—

VICTORIA—CAUSES OF DEATH : NUMBERS AND RATES,  
1961

Cause of Death*	Detailed List Numbers	Number of Deaths	Proportion of Total	Rate per 1,000,000 of Mean Population
1. Tuberculosis of Respiratory System ..	001-008	116	0.47	40
2. Tuberculosis, Other Forms .. ..	010-019	11	0.05	4
3. Syphilis and its Sequelae .. ..	020-029	35	0.14	12
7. Scarlet Fever and Streptococcal Sore Throat	050, 051	2	0.01	1
8. Diphtheria .. .. .	055	2	0.01	1
10. Meningococcal Infections .. ..	057	9	0.04	3
12. Acute Poliomyelitis .. .. .	080	3	0.01	1
14. Measles .. .. .	085	6	0.02	2
17. All Other Diseases Classified as Infective and Parasitic .. .. .	†	81	0.33	28
18. Malignant Neoplasms—				
Digestive Organs and Peritoneum ..	150-159	1,478	6.03	505
Lung .. .. .	162, 163	556	2.27	190
Breast .. .. .	170	383	1.56	131
Genital Organs .. .. .	171-179	545	2.23	186
Urinary Organs .. .. .	180, 181	197	0.80	67
Leukaemia and Aleukaemia .. ..	204	176	0.72	60
Other Malignant and Lymphatic Neoplasms .. .. .	‡	664	2.71	227
19. Benign and Unspecified Neoplasms ..	210-239	54	0.22	18
20. Diabetes Mellitus .. .. .	260	446	1.82	152
21. Anaemias .. .. .	290-293	99	0.40	34
22. Vascular Lesions Affecting Central Nervous System .. .. .	330-334	3,292	13.44	1,124
23. Non-Meningococcal Meningitis .. ..	340	36	0.15	12
24. Rheumatic Fever .. .. .	400-402	11	0.04	4
25. Chronic Rheumatic Heart Disease ..	410-416	192	0.78	66
26. { Arteriosclerotic Heart Disease .. ..	420	6,094	24.87	2,081
{ Degenerative Heart Disease .. ..	421, 422	1,191	4.86	407
27. Other Diseases of Heart .. .. .	430-434	679	2.77	232
28. Hypertension with Heart Disease ..	440-443	384	1.57	131
29. Hypertension without Mention of Heart ..	444-447	258	1.05	88

VICTORIA—CAUSES OF DEATH: NUMBERS AND RATES, 1961—  
continued

Cause of Death*	Detailed List Numbers	Number of Deaths	Proportion of Total	Rate per 1,000,000 of Mean Population	
30. Influenza .. .. .	480-483	33	0.14	11	
31. Pneumonia .. .. .	490-493	764	3.12	261	
32. Bronchitis .. .. .	500-502	449	1.83	153	
33. Ulcer of Stomach and Duodenum ..	540-541	160	0.65	55	
34. Appendicitis .. .. .	550-553	20	0.08	7	
35. Intestinal Obstruction and Hernia ..	560, 561, 570	119	0.49	41	
36. Gastritis, Duodenitis, Enteritis and Colitis, except Diarrhoea of the Newborn ..	543, 571, 572	91	0.37	31	
37. Cirrhosis of Liver .. .. .	581	148	0.60	51	
38. Nephritis and Nephrosis .. .. .	590-594	222	0.91	76	
39. Hyperplasia of Prostate .. .. .	610	136	0.56	46	
40. Complications of Pregnancy, Childbirth and the Puerperium .. .. .	640-652, 660, 670-689	21	0.09	7	
41. Congenital Malformations .. .. .	750-759	351	1.43	120	
42. Birth Injuries, Post-natal Asphyxia and Atelectasis .. .. .	760-762	410	1.67	140	
43. Infections of the Newborn .. .. .	763-768	56	0.23	19	
44. Other Diseases Peculiar to Early Infancy, and Immaturity Unqualified .. .. .	769-776	255	1.04	87	
45. Senility without Mention of Psychosis, Ill-defined and Unknown Causes .. .. .	780-795	172	0.70	59	
46. {	General Arteriosclerosis .. .. .	450	825	3.37	282
	Other Diseases of Circulatory System ..	451-468	205	0.84	70
	Other Diseases of Respiratory System ..	470-475, 510-527	234	0.96	80
	All Other Diseases .. .. .	Residual	1,008	4.12	344
47. Motor Vehicle Accidents .. .. .	E810-E835	816	3.33	279	
48. All Other Accidents .. .. .	E800-E802, E840-E962	694	2.83	237	
49. Suicide and Self-Inflicted Injury .. ..	E963, E970-E979	271	1.11	93	
50. Homicide and Operations of War .. ..	E964, E 965, E980-E999	40	0.16	14	
Total All Causes .. .. .	..	24,500	100.00	8,370	

\* No deaths were recorded in the following categories in 1961 :- 4. Typhoid Fever (040), 5. Cholera (043), 6. Dysentery (045-048), 9. Whooping Cough (056), 11. Plague (058), 13. Smallpox (084), 15. Typhus and Other Rickettsial Diseases (100-108), 16. Malaria (110-117).

† 030-039, 041, 042, 044, 049, 052-054, 059-074, 081-083, 086-096, 120-138.

‡ 140-148, 160-161, 164, 165, 190-203, 205.

Graphs of death rates from certain causes in selected years in the period 1931 to 1961 appear on page 156.

The diagrams illustrate the decreasing mortality from infectious and respiratory diseases and the decline in infant mortality; increases in death rates from malignant neoplasms and accidents are also illustrated.

VICTORIA—DEATH RATES : SELECTED CAUSES, 1931 TO 1961

Per 100,000 Mean Population

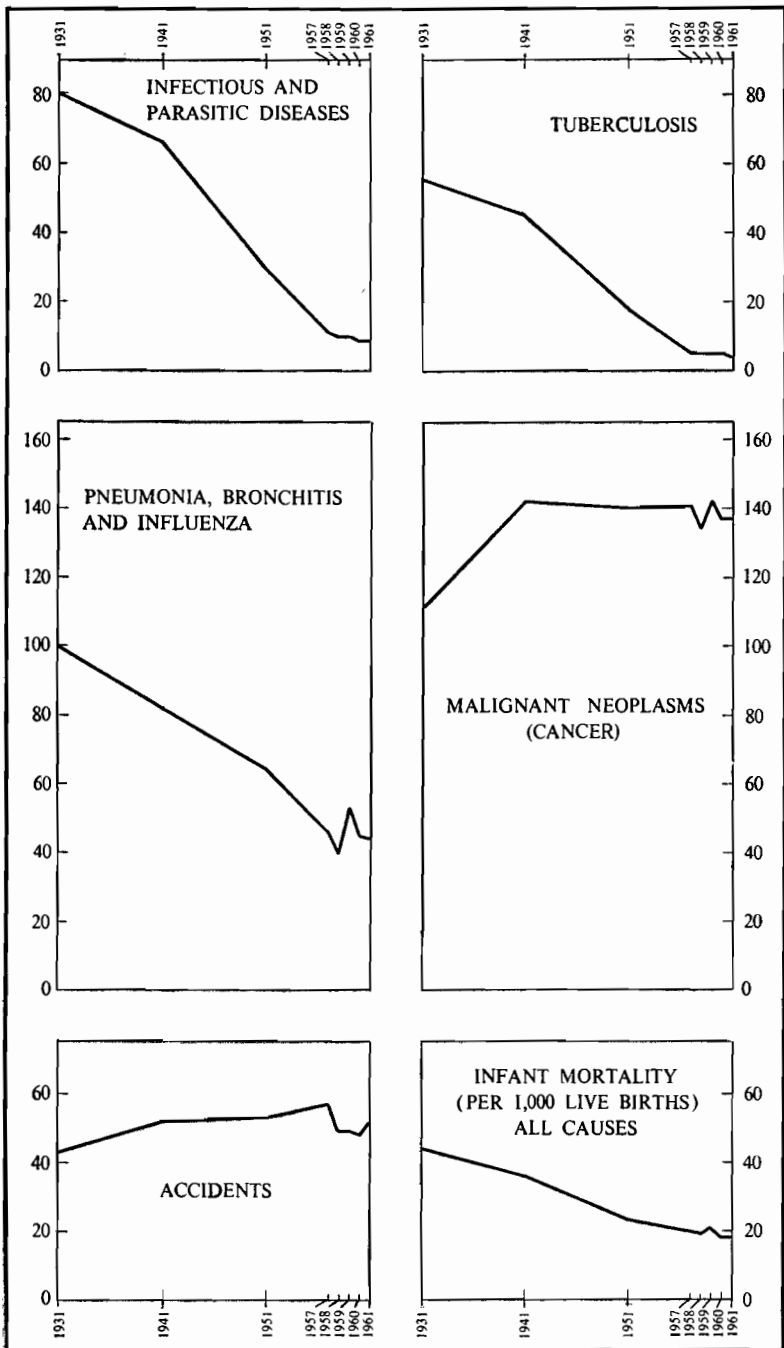


FIGURE 9.

The following table shows deaths in 1961, in certain age groups, detailing the main causes of death within those age groups:—

VICTORIA—MAIN CAUSES OF DEATHS (IN AGE GROUPS),  
1961

International List Number	Age Group and Cause of Death	Deaths from Specified Cause			
		In Age Group		At All Ages	
		Number	Per Cent.	Number	Per Cent.
	<b>Under 1 Year</b> .. .. .	<b>1,173</b>	<b>100·0</b>	..	..
762	Post-natal asphyxia and atelectasis .. .. .	242	20·6	242	100·0
750-759	Congenital malformations .. .. .	228	19·4	351	65·0
760, 761	Birth injuries .. .. .	167	14·2	168	99·4
774-776	Immaturity .. .. .	155	13·2	155	100·0
480-502, 763	Pneumonia, bronchitis and influenza .. .. .	120	10·2	1,290	9·3
	Other causes .. .. .	261	22·3	..	..
	<b>1-4 years</b> .. .. .	<b>268</b>	<b>100·0</b>	..	..
800-999	Accidental and violent deaths .. .. .	98	36·6	1,821	5·4
750-759	Congenital malformations .. .. .	37	13·9	351	10·5
140-205	*Cancer (all forms) .. .. .	28	10·4	3,999	0·7
480-502	Pneumonia, bronchitis and influenza .. .. .	26	9·7	1,290	2·0
001-138	Infective and parasitic diseases .. .. .	21	7·8	265	7·9
	Other causes .. .. .	58	21·6	..	..
	<b>5-14 years</b> .. .. .	<b>230</b>	<b>100·0</b>	..	..
800-999	Accidental and violent deaths .. .. .	92	40·0	1,821	5·1
140-205	*Cancer (all forms) .. .. .	35	15·2	3,999	0·9
750-759	Congenital malformations .. .. .	28	12·2	351	8·0
480-502	Pneumonia, bronchitis and influenza .. .. .	15	6·5	1,290	1·2
330-334	Vascular lesions affecting central nervous system .. .. .	11	4·8	3,292	0·3
	Other causes .. .. .	49	21·3	..	..
	<b>15-19 years</b> .. .. .	<b>193</b>	<b>100·0</b>	..	..
800-999	Accidental and violent deaths .. .. .	119	61·7	1,821	6·5
140-205	*Cancer (all forms) .. .. .	14	7·3	3,999	0·3
401, 410-443	Diseases of the heart .. .. .	10	5·2	8,549	0·1
480-502	Pneumonia, bronchitis and influenza .. .. .	9	4·7	1,290	0·7
750-759	Congenital malformations .. .. .	7	3·6	351	2·0
	Other causes .. .. .	34	17·5	..	..
	<b>20-24 years</b> .. .. .	<b>223</b>	<b>100·0</b>	..	..
800-999	Accidental and violent deaths .. .. .	159	71·3	1,821	8·7
140-205	*Cancer (all forms) .. .. .	20	9·0	3,999	0·5
401, 410-443	Diseases of the heart .. .. .	9	4·0	8,549	0·1
590-594	Nephritis and nephrosis .. .. .	5	2·2	222	2·3
480-502	Pneumonia, bronchitis and influenza .. .. .	4	1·8	1,290	0·3
	Other causes .. .. .	26	11·7	..	..
	<b>25-34 years</b> .. .. .	<b>426</b>	<b>100·0</b>	..	..
800-999	Accidental and violent deaths .. .. .	216	50·7	1,821	11·9
140-205	*Cancer (all forms) .. .. .	62	14·6	3,999	1·6
401, 410-443	Diseases of the heart .. .. .	41	9·6	8,549	0·5
330-334	Vascular lesions affecting central nervous system .. .. .	16	3·8	3,292	0·5
590-594	Nephritis and nephrosis .. .. .	9	2·1	222	4·1
	Other causes .. .. .	82	19·2	..	..

\* Includes Hodgkin's disease and the leukaemias.

VICTORIA—MAIN CAUSES OF DEATHS (IN AGE GROUPS), 1961—  
continued

International List Number	Age Group and Cause of Death	Deaths from Specified Cause			
		In Age Group		At All Ages	
		Number	Per Cent.	Number	Per Cent.
	<b>35-44 years</b> .. .. .	<b>854</b>	<b>100.0</b>	..	..
800-999	Accidental and violent deaths .. .. .	223	26.1	1,821	12.2
140-205	*Cancer (all forms) .. .. .	194	22.7	3,999	4.9
401, 410-443	Diseases of the heart .. .. .	194	22.7	8,549	2.3
330-334	Vascular lesions affecting central nervous system .. .. .	60	7.0	3,292	1.8
001-138	Infective and parasitic diseases .. .. .	17	2.0	265	6.4
	Other causes .. .. .	166	19.5	..	..
	<b>45-54 years</b> .. .. .	<b>1,939</b>	<b>100.0</b>	..	..
401, 410-443	Diseases of the heart .. .. .	653	33.7	8,549	7.6
140-205	*Cancer (all forms) .. .. .	482	24.8	3,999	12.1
800-999	Accidental and violent deaths .. .. .	230	11.9	1,821	12.6
330-334	Vascular lesions affecting central nervous system .. .. .	175	9.0	3,292	5.3
480-502	Pneumonia, bronchitis and influenza .. .. .	40	2.1	1,290	3.1
	Other causes .. .. .	359	18.5	..	..
	<b>55-64 years</b> .. .. .	<b>3,830</b>	<b>100.0</b>	..	..
401, 410-443	Diseases of the heart .. .. .	1,556	40.6	8,549	18.2
140-205	*Cancer (all forms) .. .. .	878	22.9	3,999	22.0
330-334	Vascular lesions affecting central nervous system .. .. .	393	10.3	3,292	11.9
800-999	Accidental and violent deaths .. .. .	206	5.4	1,821	11.3
480-502	Pneumonia, bronchitis and influenza .. .. .	156	4.1	1,290	12.1
	Other causes .. .. .	641	16.7	..	..
	<b>65-74 years</b> .. .. .	<b>6,476</b>	<b>100.0</b>	..	..
401, 410-443	Diseases of the heart .. .. .	2,592	40.0	8,549	30.3
140-205	*Cancer (all forms) .. .. .	1,266	19.5	3,999	31.7
330-334	Vascular lesions affecting central nervous system .. .. .	971	15.0	3,292	29.5
480-502	Pneumonia, bronchitis and influenza .. .. .	309	4.8	1,290	24.0
450-456	Diseases of arteries .. .. .	202	3.1	977	20.7
	Other causes .. .. .	1,136	17.6	..	..
	<b>75 years and over</b> .. .. .	<b>8,885</b>	<b>100.0</b>	..	..
401, 410-443	Diseases of the heart .. .. .	3,470	39.1	8,549	40.6
330-334	Vascular lesions affecting central nervous system .. .. .	1,657	18.6	3,292	50.3
140-205	*Cancer (all forms) .. .. .	1,017	11.4	3,999	25.4
450-456	Diseases of arteries .. .. .	698	7.9	977	71.4
480-502	Pneumonia, bronchitis and influenza .. .. .	591	6.7	1,290	45.8
	Other causes .. .. .	1,452	16.3	..	..

\* Includes Hodgkin's disease and the leukaemias.



### *Tuberculosis*

The number of deaths ascribed to tuberculosis during 1961 was 127, the rate per million of mean population being 43.

The deaths from tuberculosis of the respiratory system in 1961 numbered 116 and equalled a rate of 40 per million of the mean population. Rates for previous periods were 130 for 1950–54, 294 in 1945–49, 660 in 1918–22, 855 in 1908–12, and 1,365 in 1890–92. In 1961, tuberculosis of the respiratory system was responsible for 91 per cent. of the total deaths from tuberculosis. Of the 84 males and 32 females dying from tuberculosis of the respiratory system in 1961, two males and four females were under the age of 45 years.

### *Infective and Parasitic Diseases*

There has been a remarkable decrease in both the incidence and mortality rate of certain infective and parasitic diseases since the beginning of the century. Particulars of the decreases in diseases such as tuberculosis, typhoid fever, scarlet fever, streptococcal sore throat, diphtheria, whooping cough, meningococcal infections, small-pox and measles appeared on pages 493 to 495 of the Victorian Year Book 1954–58.

The incidence of poliomyelitis in Victoria has been recorded since the year 1916, when the disease was added to the list of compulsorily notifiable diseases. Since that year the most serious epidemic occurred in 1937–38 when 2,096 cases were reported, resulting in 113 deaths. Other epidemics occurred in 1918 (303 cases, 21 deaths), 1925 (140 cases, 25 deaths), 1949 (760 cases, 48 deaths), and 1954 (569 cases, 36 deaths).

During 1961, there were 68 cases notified which represented a rate of 23 per million of population. Three deaths occurred during the year.

Distribution of the Salk poliomyelitis vaccine began in July, 1956, and there was a marked decline in the number of cases reported since that date. (See pages 246–247 of the Victorian Year Book 1962.)

### *Malignant Neoplasms*

Deaths classified as malignant neoplasms since 1950 include deaths from Hodgkin's disease and leukaemia and aleukaemia, which were not formerly included with neoplasms. Deaths from malignant neoplasms in 1961 numbered 3,999 and represented a rate of 1,366 per million of mean population.

Rates for previous periods were 1,349 in 1960, 1,403 in 1959, 1,329 in 1958, and 1,401 in 1957.

Satisfactory comparisons of death-rates relating to malignant neoplasms are only obtained by relating the deaths to the number of persons in the community of the same sex, in age groups. This has been done for six Census periods, when the numbers of the people in age groups were accurately known, and the results are given in the following table :—

**VICTORIA—DEATH-RATES FROM MALIGNANT  
NEOPLASMS IN AGE GROUPS**

Age Group (Years)	Annual Deaths from Malignant Neoplasms per 10,000 of Each Sex					
	1900-02	1910-12	1920-22	1932-34	1946-48	1953-55
<b>MALES</b>						
Under 5 .. ..	0·30	0·73	0·46	0·27	0·60	1·11
5-9 .. ..	0·42	0·25	0·13	0·20	0·34	0·98
10-14 .. ..	0·20	0·16	0·14	0·24	0·24	0·69
15-19 .. ..	0·22	0·15	0·30	0·37	0·61	0·93
20-24 .. ..	0·33	0·71	0·64	0·73	0·69	1·27
25-34 .. ..	1·26	9·96	0·76	0·93	1·20	1·32
35-44 .. ..	3·69	3·16	3·31	3·04	3·00	4·01
45-54 .. ..	14·14	16·03	13·94	10·13	11·65	13·25
55-64 .. ..	36·00	36·36	40·46	37·25	32·73	36·99
65-74 .. ..	59·04	74·15	78·21	85·19	80·46	82·41
75 and over .. ..	74·04	88·40	110·12	133·78	148·20	163·06
All Ages .. ..	7·52	8·50	9·52	11·63	13·51	13·76
<b>FEMALES</b>						
Under 5 .. ..	0·26	0·19	0·39	0·38	0·48	1·37
5-9 .. ..	0·04	0·10	0·17	0·17	0·18	0·60
10-14 .. ..	..	0·27	0·05	0·08	0·40	0·71
15-19 .. ..	0·28	0·44	0·15	0·17	0·04	0·49
20-24 .. ..	0·23	0·41	0·30	0·39	0·60	0·56
25-34 .. ..	1·61	1·39	1·28	1·57	1·75	1·81
35-44 .. ..	6·05	7·26	6·61	6·00	6·23	6·14
45-54 .. ..	18·13	17·87	19·14	17·31	16·47	16·46
55-64 .. ..	33·05	38·03	34·48	35·82	33·40	30·93
65-74 .. ..	51·18	61·66	63·05	61·17	61·44	59·38
75 and over .. ..	62·70	86·19	92·86	106·19	111·49	117·02
All Ages .. ..	6·64	8·76	9·63	12·00	14·50	14·16

Deaths from malignant neoplasms occur at all age periods, but the rates in the above table show characteristic increases with age, reaching a maximum mortality rate in the oldest age group.

Ninety-one per cent. of the deaths from malignant neoplasms in the year 1961 were at ages 45 years and upwards.

The following table shows the site of the disease in age groups of persons who died from malignant neoplasms in 1961 :—

VICTORIA—DEATHS FROM MALIGNANT NEOPLASMS BY SEX IN VARIOUS AGE GROUPS, 1961

Site of Disease*	Sex	Age (Years)				Total
		Under 25	25-44	45-64	65 and over	
Buccal Cavity and Pharynx (140-148)	M	1	..	20	31	52
	F	1	1	9	15	26
Oesophagus (150) .. ..	M	..	..	15	27	42
	F	..	1	9	27	37
Stomach (151) .. ..	M	..	13	103	166	282
	F	..	5	30	148	183
Intestine, except Rectum (152, 153)	M	..	12	46	133	191
	F	..	10	76	194	280
Rectum (154) .. ..	M	..	2	31	56	89
	F	..	2	20	63	85
Trachea, Bronchus and Lung, Not Specified as Secondary (162, 163) ..	M	..	14	239	237	490
	F	..	4	27	35	66
Breast (170) .. ..	M	..	..	1	2	3
	F	..	38	167	175	380
Cervix Uteri (171) .. ..	F	..	23	42	42	107
Other and Unspecified Parts of Uterus (172-174)	F	1	3	27	33	64
Ovary, Fallopian Tube, and Broad Ligament (175)	F	1	5	58	45	109
Prostate (177) .. ..	M	..	..	24	206	230
Kidney (180) .. ..	M	2	5	23	19	49
	F	2	..	8	10	20
Bladder and Other Urinary Organs (181) .. ..	M	..	1	23	62	86
	F	..	..	7	35	42
Brain and Other Parts of Nervous System (193)	M	13	12	30	15	70
	F	7	10	18	5	40
Leukaemia and Aleukaemia (204)	M	21	8	34	34	97
	F	24	8	16	31	79
Other Neoplasms of Lymphatic and Haematopoietic System (200-203, 205)	M	8	11	49	28	96
	F	6	10	27	40	83
All Other and Unspecified Sites	M	5	39	113	182	339
	F	8	19	68	187	282
Total .. ..	M	50	117	751	1,198	2,116
	F	50	139	609	1,085	1,883

\* Figures in parentheses are in respect of the Seventh Revision of the International List of Causes of Death.

*Diabetes Mellitus*

During 1961, diabetes was responsible for 179 male and 267 female deaths, representing a rate of 152 per million of the mean population. Rates for previous periods were 137 in 1960, 131 in 1959, 150 in 1958, and 167 in 1957.

*Vascular Lesions Affecting Central Nervous System*

In 1961, 1,359 male and 1,933 female deaths were ascribed to vascular lesions affecting the central nervous system, the total—3,292—corresponding to a rate of 1,124 per million of the mean population. Of the 3,292 deaths in 1961, 151 were due to subarachnoid haemorrhage, 1,652 to cerebral haemorrhage, 1,180 to cerebral embolism and thrombosis, and 309 to other vascular lesions.

The following table shows deaths in 1961 from vascular lesions affecting the central nervous system according to sex and age group :—

VICTORIA—DEATHS FROM VASCULAR LESIONS  
AFFECTING CENTRAL NERVOUS SYSTEM BY  
SEX IN VARIOUS AGE GROUPS, 1961

Cause of Death*	Sex	Age Group (Years)					Total Deaths
		Under 45	45-54	55-64	65-74	75 and over	
Subarachnoid Haemorrhage (330)	M	24	13	19	6	4	66
	F	21	22	17	14	11	85
Cerebral Haemorrhage (331) ..	M	21	53	120	224	258	676
	F	12	55	121	304	484	976
Cerebral Embolism and Thrombosis (332)	M	3	11	47	173	249	483
	F	4	13	50	177	453	697
Other and Ill-defined Vascular Lesions Affecting Central Nervous System (334)	M	6	5	13	44	66	134
	F	4	3	6	29	133	175
Total .. ..	M	54	82	199	447	577	1,359
	F	41	93	194	524	1,081	1,933

\* Figures in parentheses are in respect of the Seventh Revision of the International List of Causes of Death.

*Diseases of the Heart*

During 1961, there were 8,540 deaths ascribed to diseases of the heart, including 192 due to chronic rheumatic heart disease, 7,285 to arteriosclerotic and degenerative heart disease, 679 to other diseases of the heart, and 384 to hypertension with heart disease. The total of these causes in 1961 represented a rate of 2,917 per million of the mean population.

The following table shows deaths in Victoria in 1961 from heart diseases, according to sex and age group :—

VICTORIA—DEATHS FROM HEART DISEASES BY SEX IN VARIOUS AGE GROUPS, 1961

Cause of Death*	Sex	Age Group (Years)					Total Deaths
		Under 45	45-54	55-64	65-74	75 and over	
Chronic Rheumatic Heart Disease (410-416)	M	16	18	20	15	16	85
	F	16	15	25	32	19	107
Arteriosclerotic Heart Disease (420)	M	142	459	988	1,292	995	3,876
	F	17	85	317	735	1,064	2,218
Degenerative Heart Disease (421, 422)	M	18	25	52	116	325	536
	F	20	6	27	117	485	655
Other Diseases of Heart (430-434)	M	20	13	52	91	157	333
	F	20	10	25	76	215	346
Hypertension with Heart Disease (440-443)	M	2	13	24	43	57	139
	F	..	7	26	75	137	245
Total .. ..	M	198	528	1,136	1,557	1,550	4,969
	F	73	123	420	1,035	1,920	3,571

\* Figures in parentheses are in respect of the Seventh Revision of the International List of Causes of Death.

### *Diseases of the Respiratory System*

In 1961, deaths from diseases of the respiratory system numbered 1,481 which represented a rate of 506 per million of the mean population. Of these deaths in 1961, 33 were due to influenza, 88 to lobar pneumonia, 559 to broncho-pneumonia, 118 to other and unspecified pneumonia, 449 to bronchitis, ten to empyema and abscess of lung, nine to pleurisy, 15 to pulmonary congestion and hypostasis, 30 to bronchiectasis, and 170 to other diseases.

The 33 deaths from influenza in 1961 represented a rate of 11 per million of the mean population.

Influenza has generally proved more fatal to elderly people than to those at middle or young ages. In the epidemic of 1919, however, 72 per cent. of the deaths were of persons between 20 and 50 years of age. In 1961, 21 per cent. of the deaths were of persons under 50 years of age.

*Diseases of the Digestive System*

In 1961, there were 398 male and 322 female deaths from diseases of the digestive system, representing a rate of 246 per million of the mean population. Rates for previous periods were 270 in 1960, 303 in 1959, 288 in 1958, and 289 in 1957. Deaths from these causes in 1961 were : 160 from ulcers of the stomach and duodenum, three from gastritis and duodenitis, 20 from appendicitis, 119 from intestinal obstruction and hernia, 39 from gastro-enteritis and colitis, except diarrhoea of the newborn, 148 from cirrhosis of the liver, 71 from cholelithiasis and cholecystitis, and 160 from other diseases.

*Disease of the Genito-urinary System*

In 1961, there were 533 deaths attributed to diseases of the genito-urinary system. This number represented a rate of 182 per million of the mean population. In 1961, nephritis and nephrosis were responsible for 222 deaths, infections of the kidney for 110, calculi of urinary system for fourteen, hyperplasia of prostate for 136, and other diseases of genito-urinary system for 51.

*Maternal Deaths*

The death-rate of women in childbirth is usually ascertained by comparing the number of deaths of parturient women with the total number of live births.

This rate varies considerably at different ages, and is higher at older than younger ages. The number of deaths of women in childbirth and the death-rates in various age groups in Victoria for the years 1957 to 1961 are shown in the following table :—

## VICTORIA—MATERNAL DEATHS

Age Group (Years)	Deaths of Mothers					Deaths per 10,000 Children Born Alive to Mothers in Each Age Group				
	1957	1958	1959	1960	1961	1957	1958	1959	1960	1961
Under 20 .. ..	1	1	..	1	..	3·2	2·8	..	2·5	..
20-24 .. .. .	4	2	..	..	3	2·5	1·1	..	..	1·5
25-29 .. .. .	7	4	6	5	6	3·7	2·1	3·1	2·6	3·1
30-34 .. .. .	9	8	4	4	3	7·1	6·2	3·1	3·0	2·3
35-39 .. .. .	5	2	4	3	7	8·7	3·1	6·2	4·6	10·5
40 and over ..	1	2	2	3	2	5·2	10·9	11·2	17·0	10·4
Total .. .. .	27	19	16	16	21	4·6	3·1	2·6	2·5	3·2

*Accidental Deaths*

The following table shows particulars of deaths in Victoria in 1961 which were due to accidents, and which represented 6 per cent. of the total deaths :—

## VICTORIA—ACCIDENTAL DEATHS, 1961

International List No.	Cause of Death	Males	Females	Total
E800-E802 .. ..	Railway accidents .. ..	20	4	24
E810-E835 .. ..	Motor vehicle accidents .. ..	617	199	816
E840-E845 .. ..	Other road vehicle accidents .. ..	15	3	18
E850-E858 .. ..	Water transport accidents .. ..	11	2	13
E860-E866 .. ..	Aircraft accidents .. ..	3	1	4
E870-E888 .. ..	Accidental poisoning by solid and liquid substances .. ..	21	19	40
E890-E895 .. ..	Accidental poisoning by gases and vapours .. ..	9	5	14
E900-E904 .. ..	Accidental falls .. ..	95	152	247
E912 .. ..	Accident caused by machinery .. ..	8	..	8
E914 .. ..	Accident caused by electric current .. ..	23	4	27
E916 .. ..	Accident caused by fire and explosion of combustible material .. ..	20	17	37
E917, E918 .. ..	Accident caused by hot substance, corrosive liquid, steam, and radiation .. ..	1	2	3
E919 .. ..	Accident caused by firearm .. ..	32	2	34
E924, E925 .. ..	Accidental mechanical suffocation .. ..	3	4	7
E927 .. ..	Accidents caused by bites and stings of venomous animals and insects .. ..	..	3	3
E928 .. ..	Other accidents caused by animals .. ..	3	1	4
E929 .. ..	Accidental drowning and submersion .. ..	102	24	126
E935 .. ..	Lightning .. ..	..	..	..
E910, E911, E913, E915, E920-E923, E926, E930-E934, E936, E940-E946, E950-E959, E960-E962 .. ..	} All other accidental causes .. ..	64	21	85
	Total .. ..	1,047	463	1,510

For the five years 1957 to 1961, the female mortality rate from accidents was 44 per cent. of the rate for males.

*Accidental Deaths Involving Motor Vehicles*

The number of motor vehicles (including motor cycles) registered in Victoria and the deaths in which they were involved, for the years 1957 to 1961, were as follows :—

## VICTORIA—DEATHS INVOLVING MOTOR VEHICLES

Year	Number of Motor Vehicles at 30th June	Deaths Involving Motor Vehicles		
		Number*	Per 10,000 Motor Vehicles	Per 1,000,000 of Mean Population
1957 .. ..	708,582	667	9.4	249
1958 .. ..	747,834	597	8.0	218
1959 .. ..	789,358	670	8.5	238
1960 .. ..	846,830	742	8.8	257
1961 .. ..	892,144	816	9.1	279

\*Deaths of pedestrians included in this column numbered 218, 203, 192, 227 and 238 respectively.

*Transport Accidents*

In 1961, deaths from all transport accidents numbered 875, as against 799 in 1960, 739 in 1959, 659 in 1958, and 714 in 1957.

During the year 1961, deaths connected with transport represented 58 per cent. of the total deaths from accidents. The corresponding percentage in 1960 was also 58.

*Suicide and Self-inflicted Injury*

In the year 1961, 182 males and 89 females committed suicide or died from self-inflicted injury not specified as accidental. These deaths represented a rate of 93 per million of the population as compared with 89 in 1960, 94 in 1959, 90 in 1958, and 89 in 1957.

Of the 182 male deaths in 1961, 57 (31 per cent.) were connected with firearms and explosives.

*Homicide*

The number of deaths ascribed to homicide and registered in 1961 was 35 (19 males and 16 females).

Since 1930, deaths from criminal abortion have been excluded from this category and included with deaths from maternal causes.

**Infant Mortality**

The mortality of children under one year, in proportion to live births, reveals a remarkable decline since 1890—the deaths per 1,000 children born having fallen from 133 in 1885–89 to 19 in 1957–61—a reduction of 86 per cent. In other words, where 100 infants died in the earlier period, only fourteen died in the latter.

The reduction has been assisted by various Health Acts and educative measures, including the notification of infectious diseases, the regulation of the manufacture, sale and distribution of foodstuffs and patent medicines, and the provision of a pure water supply. The passing of the Midwives Act in 1915 and the inauguration of the Infant Welfare Movement in 1917 coincide with and, in a large degree, account for the reduction of the rate in latter years.

The following statement shows the number of infant deaths and the infant death-rate per 1,000 live births in each of the Australian States and Territories for the years 1957 to 1961 :—

**AUSTRALIA—INFANT DEATHS**

Year	New South Wales	Victoria	Queensland	South Australia	Western Australia	Tasmania	Northern Territory	Australian Capital Territory	Australia
1957 ..	1,804	1,219	732	403	357	170	22	10	4,717
1958 ..	1,704	1,178	657	449	360	167	22	23	4,560
1959 ..	1,832	1,320	721	422	345	202	31	16	4,889
1960 ..	1,735	1,182	740	397	366	169	26	28	4,643
1961 ..	1,800	1,173	733	448	336	151	21	27	4,689



## AUSTRALIA—INFANT MORTALITY RATES\*

Year	New South Wales	Victoria	Queensland	South Australia	Western Australia	Tasmania	Northern Territory	Australian Capital Territory	Australia
1957 ..	22·70	20·16	21·68	20·63	21·09	20·15	34·06	8·82	21·41
1958 ..	21·29	19·23	19·40	22·40	21·52	19·49	31·56	18·04	20·49
1959 ..	22·65	21·21	20·25	20·71	20·16	23·42	38·94	11·75	21·54
1960 ..	21·16	18·46	21·01	18·94	21·62	19·09	33·46	17·69	20·16
1961 ..	20·84	17·80	20·01	20·00	19·67	16·81	23·92	15·57	19·54

\* Number of deaths under one year of age per 1,000 live births.

The infant death-rates for Melbourne Metropolitan Area, for the remainder of the State, and for the whole State, for the years 1957 to 1961, are shown in the following table :—

## VICTORIA—INFANT MORTALITY

Period	Melbourne Metropolitan Area		Remainder of State		Victoria	
	Number of Deaths under One Year	Rate per 1,000 Live Births	Number of Deaths under One Year	Rate per 1,000 Live Births	Number of Deaths under One Year	Rate per 1,000 Live Births
1957 ..	695	19·6	524	20·9	1,219	20·2
1958 ..	710	19·6	468	18·6	1,178	19·2
1959 ..	758	20·3	562	22·5	1,320	21·2
1960 ..	734	18·7	448	18·0	1,182	18·5
1961 ..	719	17·4	454	18·4	1,173	17·8

The practice was introduced in 1923 of allotting all births and deaths to the place of usual residence of the parties. In the cases of births and infant deaths the mother's residence is considered to be that of the child.

The infant death-rates have shown a decrease in each quinquennial period from 1885 onwards. In 1954, the rate fell below 20 per 1,000 births for the first time. In 1961, the rate was 17·8, the lowest on record.

The decrease in the infant death-rate, since the earlier periods, has been shared proportionally by each age group except that of "under one week". The rate per 1,000 births for infants "under one week" has varied from 21·5 in the quinquennium 1910-14 to 22·7 in 1925-29 and 12·7 in 1955-59. The rate for infants "one week and under one month" declined from 11·1 in 1910-14 to 1·8 in 1955-59, a decrease of 84 per cent., and that for infants "one month and under one year" from 41·2 to 5·2, a decrease of 87 per cent. Between the ages of one month and one year, Victoria lost 64 out of every 1,000 children born in 1900-04, 33 in 1915-19, and 5 in 1955-59. In 1961, the mortality of infants "under one week" comprised 68 per cent. of the total infant mortality.

The rate for male infants is consistently higher than that for females, and in the period 1957-61 exceeded the female rate by 19.3 per cent. In the same period, male infant deaths exceeded female by 706 and male births were 8,563 in excess of female births.

The following table shows the number of deaths of infants at certain ages by causes in 1961 :—

VICTORIA—INFANT MORTALITY AT CERTAIN AGES,  
BY CAUSES, 1961

Cause of Death*	Deaths under One Year					Total under One Year
	Under One Week	One Week and under One Month	One Month and under Three Months	Three Months and under Six Months	Six Months and under Twelve Months	
Infective and Parasitic Diseases (1-138) ..	1	1	6	7	3	18
Pneumonia and Bronchitis (490-493, 500-502) ..	..	..	29	29	17	75
Gastro-enteritis and Colitis (except Ulcerative), Age Four Weeks and over (571) ..	..	..	5	3	3	11
Congenital Malformations (750-759) ..	100	40	39	26	23	228
Certain Diseases of Early Infancy—						
Birth Injuries (760, 761)						
(a) Without Mention of Immaturity ..	67	5	..	..	..	72
(b) With Immaturity ..	94	1	..	..	..	95
Postnatal Asphyxia and Atelectasis (762)—						
(a) Without Mention of Immaturity ..	61	..	1	..	..	62
(b) With Immaturity ..	177	3	..	..	..	180
Infections of the Newborn (763-768)—						
Pneumonia of Newborn—						
(a) Without Mention of Immaturity ..	14	14	..	..	..	28
(b) With Immaturity ..	12	4	..	..	..	16
Diarrhoea of Newborn—						
(a) Without Mention of Immaturity ..	..	1	..	..	..	1
(b) With Immaturity ..	..	2	..	..	..	2
Other Infections of the Newborn—						
(a) Without Mention of Immaturity ..	4	3	1	..	..	8
(b) With Immaturity ..	1	..	..	..	..	1
Other Diseases Peculiar to Early Infancy (769-775)—						
(a) Without Mention of Immaturity ..	48	..	2	..	..	50
(b) With Immaturity ..	52	3	1	..	..	56
Immaturity Unqualified (776) ..	143	6	..	..	..	149
All Other Diseases ..	17	11	25	24	22	99
Accidents, Poisonings, and Violence ..	2	..	3	5	12	22
Total All Causes ..	793	94	112	94	80	1,173

\* Figures in parentheses are in respect of the Seventh Revision of the International List of Causes of Death.

The following tables show mortality rates at certain ages under one year for the years 1957 to 1961 :—

VICTORIA—INFANT MORTALITY AT CERTAIN AGES

Period	Deaths under One Year per 1,000 Live Births						Males	Females
	Under One Week	One Week and under One Month	One Month and under Three Months	Three Months and under Six Months	Six Months and under Twelve Months	Total under One Year		
1957 ..	13.2	1.8	1.7	1.7	1.8	20.2	21.4	18.8
1958 ..	12.8	1.7	1.4	1.8	1.5	19.2	20.4	17.9
1959 ..	13.4	1.8	1.8	2.2	2.0	21.2	23.2	19.1
1960 ..	12.1	1.7	1.5	1.6	1.6	18.5	20.7	16.1
1961 ..	12.1	1.4	1.7	1.4	1.2	17.8	19.4	16.2

VICTORIA—INFANT MORTALITY AT CERTAIN AGES,  
BY SEX, 1961

Sex	Under One Week	One Week and under One Month	One Month and under Three Months	Three Months and under Six Months	Six Months and under Twelve Months	Total under One Year
<b>Males—</b>						
Number .. ..	450	49	61	57	39	656
Rate* .. ..	13·3	1·4	1·8	1·7	1·2	19·4
Percentage at Each Age ..	68·60	7·47	9·30	8·69	5·94	100·00
<b>Females—</b>						
Number .. ..	343	45	51	37	41	517
Rate* .. ..	10·7	1·4	1·6	1·2	1·3	16·2
Percentage at Each Age ..	66·34	8·70	9·87	7·16	7·93	100·00

\* Number of deaths under one year of age per 1,000 live births.

From 1950, infant deaths were classified according to the Sixth (1948) Revision of the International List of Causes of Death. Owing to the change in classification, figures since 1950 are not exactly comparable with figures for previous years. The Seventh (1955) Revision of the International List of Causes of Death was adopted for use in 1958.

A comparison of infant mortality rates from the principal causes for certain periods from 1891 to 1949 was shown on page 506 of the Victorian Year Book 1954–58.

In 1961, 499 deaths were connected with immaturity, either directly or in association with other causes, and all except one of these deaths were of children under one month of age. The deaths connected with immaturity represented 43 per cent. of the total infant deaths. Congenital malformations were responsible for 228, or 19 per cent., of the infant deaths. It will thus be seen that 62 per cent. of the total infant mortality in 1961 was related to immaturity and congenital malformations.

### Stillbirths

Registration of stillbirths came into operation in Victoria in 1953. For registration purposes, a "still-born child" means any child born of its mother after the 28th week of pregnancy, which did not at any time after being born, breathe or show any other sign of life, and, where the duration of pregnancy is not reliably ascertainable, includes any foetus weighing not less than 2 lb. 12 oz.

The following table contains information about stillbirths and infant mortality in Victoria from 1957 to 1961 :—

### VICTORIA—STILLBIRTHS AND INFANT MORTALITY

Year	Stillbirths		Deaths under One Month		Deaths under One Month plus Stillbirths		Deaths under One Year plus Stillbirths	
	Number	Rate per 1,000 Births (Live and Still)	Number	Rate per 1,000 Births (Live and Still)	Number	Rate per 1,000 Births (Live and Still)	Number	Rate per 1,000 Births (Live and Still)
1957 ..	894	14·57	908	14·80	1,802	29·37	2,113	34·44
1958 ..	826	13·31	887	14·28	1,713	27·59	2,004	32·27
1959 ..	799	12·67	950	15·07	1,749	27·74	2,119	33·61
1960 ..	850	13·10	878	13·53	1,728	26·64	2,032	31·32
1961 ..	885	13·25	887	13·28	1,772	26·54	2,058	30·82

The causes of stillbirths in Victoria, classified according to the International Statistical Classification, are given in the following table for the years 1957 to 1961 :—

### VICTORIA—CAUSES OF STILLBIRTHS

Classification Number	Cause of Stillbirth	Number of Stillbirths				
		1957	1958	1959	1960	1961
Y 30 ..	Chronic Disease in Mother .. ..	22	12	26	32	22
Y 31 ..	Acute Disease in Mother .. ..	8	3	1	9	9
Y 32 ..	Diseases and Conditions of Pregnancy and Childbirth .. ..	33	31	53	52	48
Y 33 ..	Absorption of Toxic Substance from Mother .. ..	..	..	..	..	..
Y 34 ..	Difficulties in Labour .. ..	57	70	80	80	76
Y 35 ..	Other Causes in Mother .. ..	4	3	11	4	3
Y 36 ..	Placental and Cord Conditions .. ..	367	353	361	342	397
Y 37 ..	Birth Injury .. ..	21	11	6	17	12
Y 38 ..	Congenital Malformation of Foetus .. ..	79	89	65	84	85
Y 39 ..	Diseases of Foetus, and Ill-defined Causes .. ..	303	254	196	230	233
	Total .. ..	894	826	799	850	885

### Cremation

There are now four crematoria in Victoria—one at Springvale, one at the new Melbourne General Cemetery, Fawkner, one at Ballarat, and one at Western Suburbs Memorial Park, Altona North. The history of the establishment of the first two is contained in an article published in the Year Book 1942-43, page 307. The Ballarat Crematorium commenced operations in 1958, and the Western Suburbs Crematorium in 1961.

The number of cremations in relation to total deaths from 1957 to 1961 are shown in the following table :—

### VICTORIA—CREMATIONS AND DEATHS

Year	Total Cremations	Total Deaths	Percentage of Cremations to Deaths
1957 ..	6,849	24,131	28·38
1958 ..	6,913	23,625	29·26
1959 ..	7,549	25,078	30·10
1960 ..	7,839	24,547	31·93
1961 ..	7,923	24,500	32·34